

Replace the Inner Control Cable

1. Remove the lower cam from the cam assembly housing.

Figure 59: Removing the Lower Cam



-
- Detach the inner control cable from the cam assembly with a 1.5 mm hex key driver.

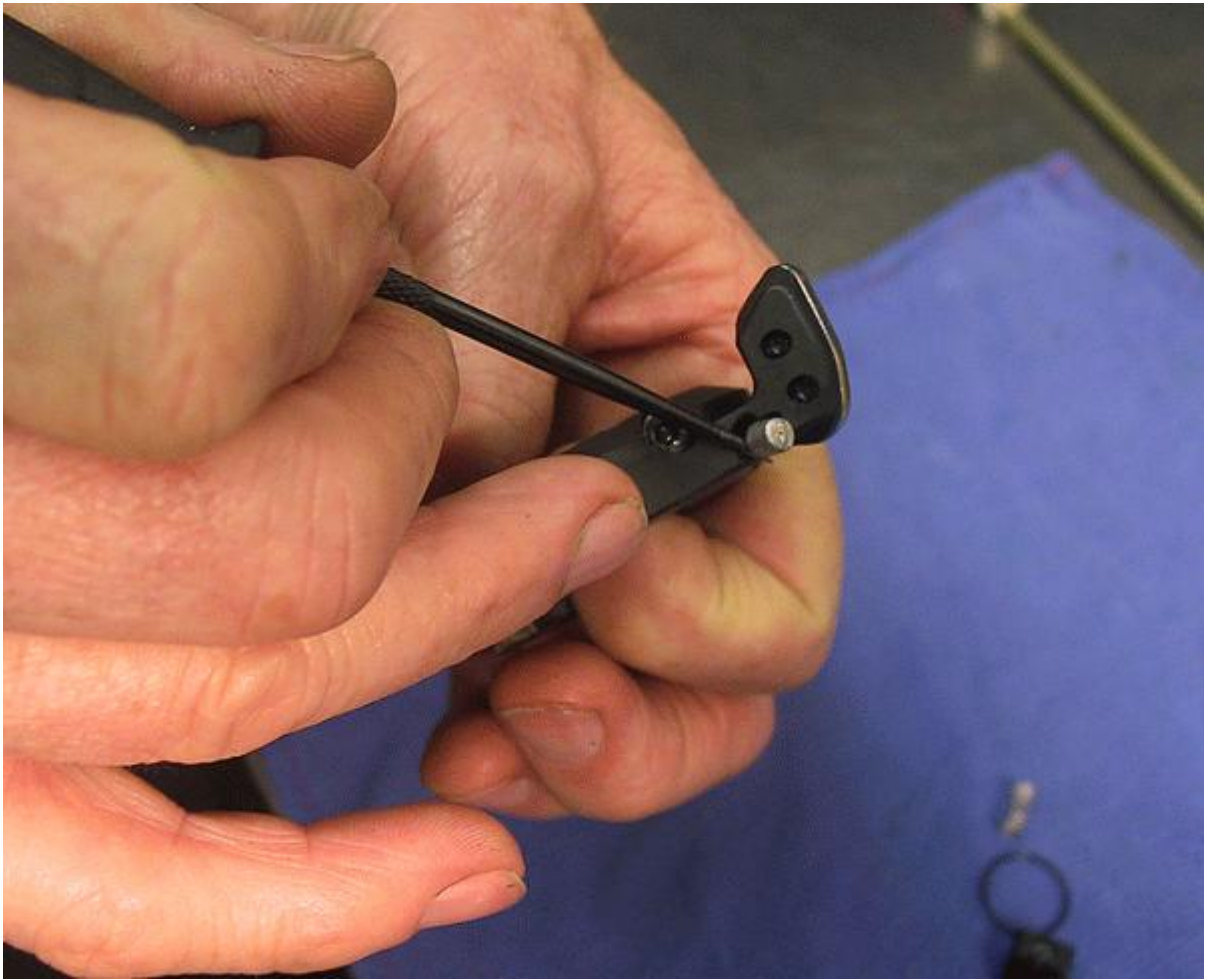
Figure 60: Removing the Inner Control Cable





- Pry the original cable from the **remote** lockout lever with a pick tool, and remove.

Figure 61: Removing the Original Control Cable





- Install the new control cable, pulling it through the **remote** lockout lever until the cable stop seats into place. Use a derailleur cable of gauge not greater than 1.2 mm.

Figure 62: Installing the New Control Cable



- Turn the cable adjusting barrel in fully clockwise, and back out a single turn counter-clockwise. Seat the control cable housing with cable housing ferrule cap fully into the **remote** lockout lever.

Figure 63: **Remote** Lockout Lever with Cable



Mark the new control cable at 0.640" from the cam assembly end of the cable housing, and cut it.

Figure 64: Measuring Exposed Inner Cable to 0.640"

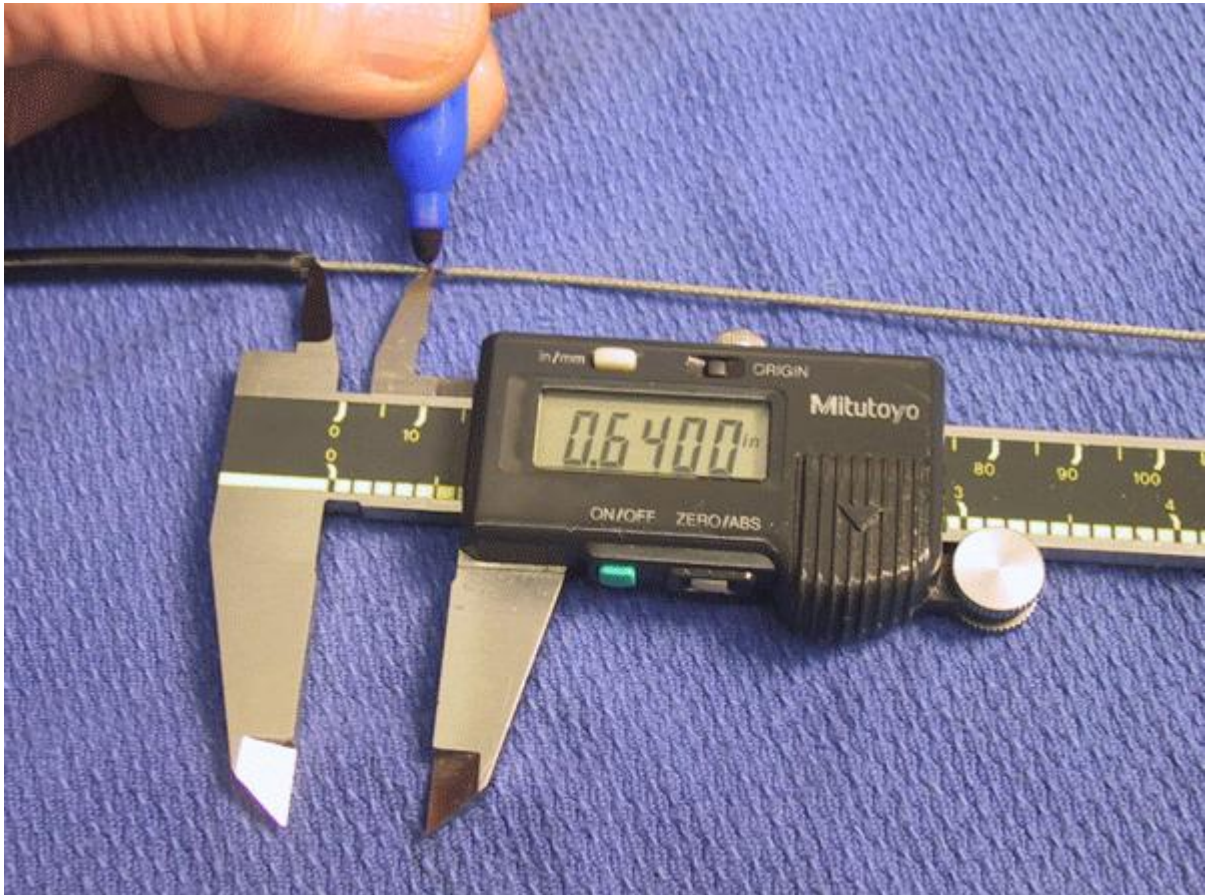
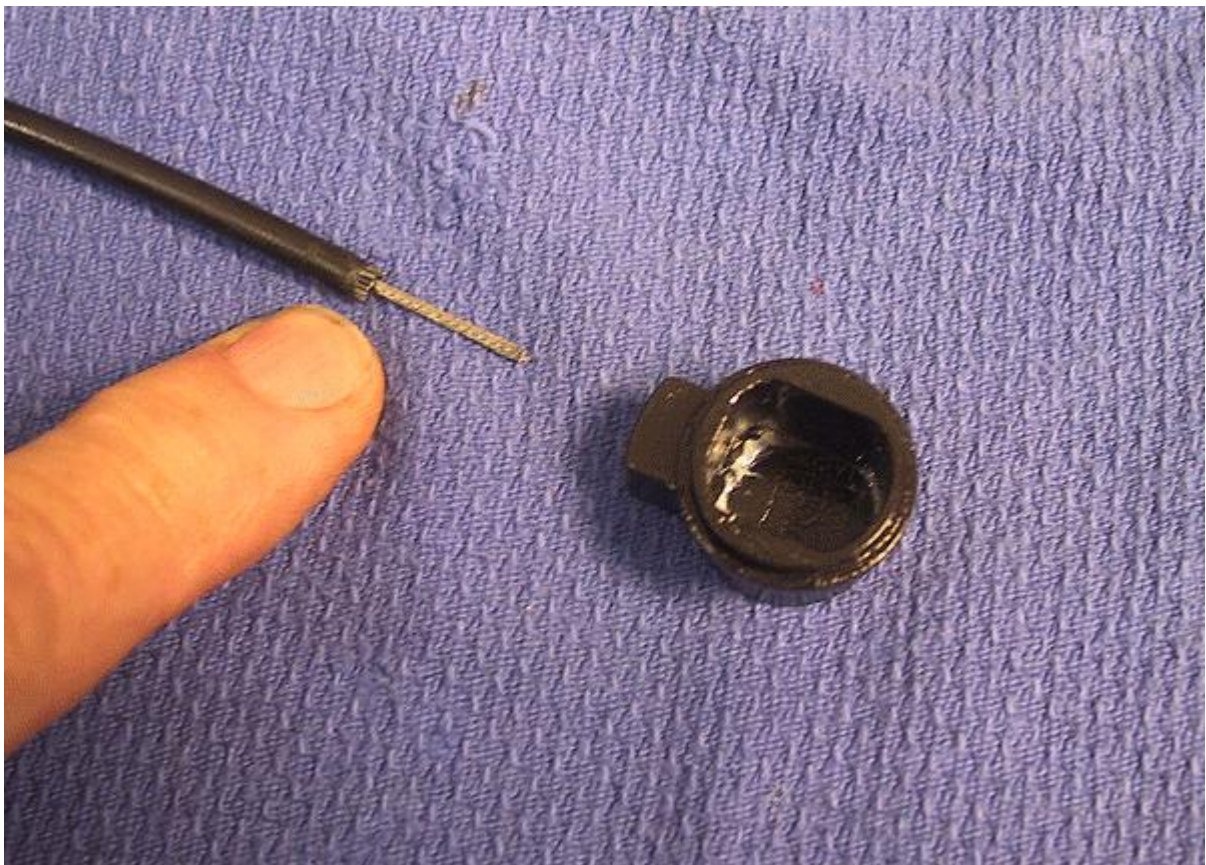
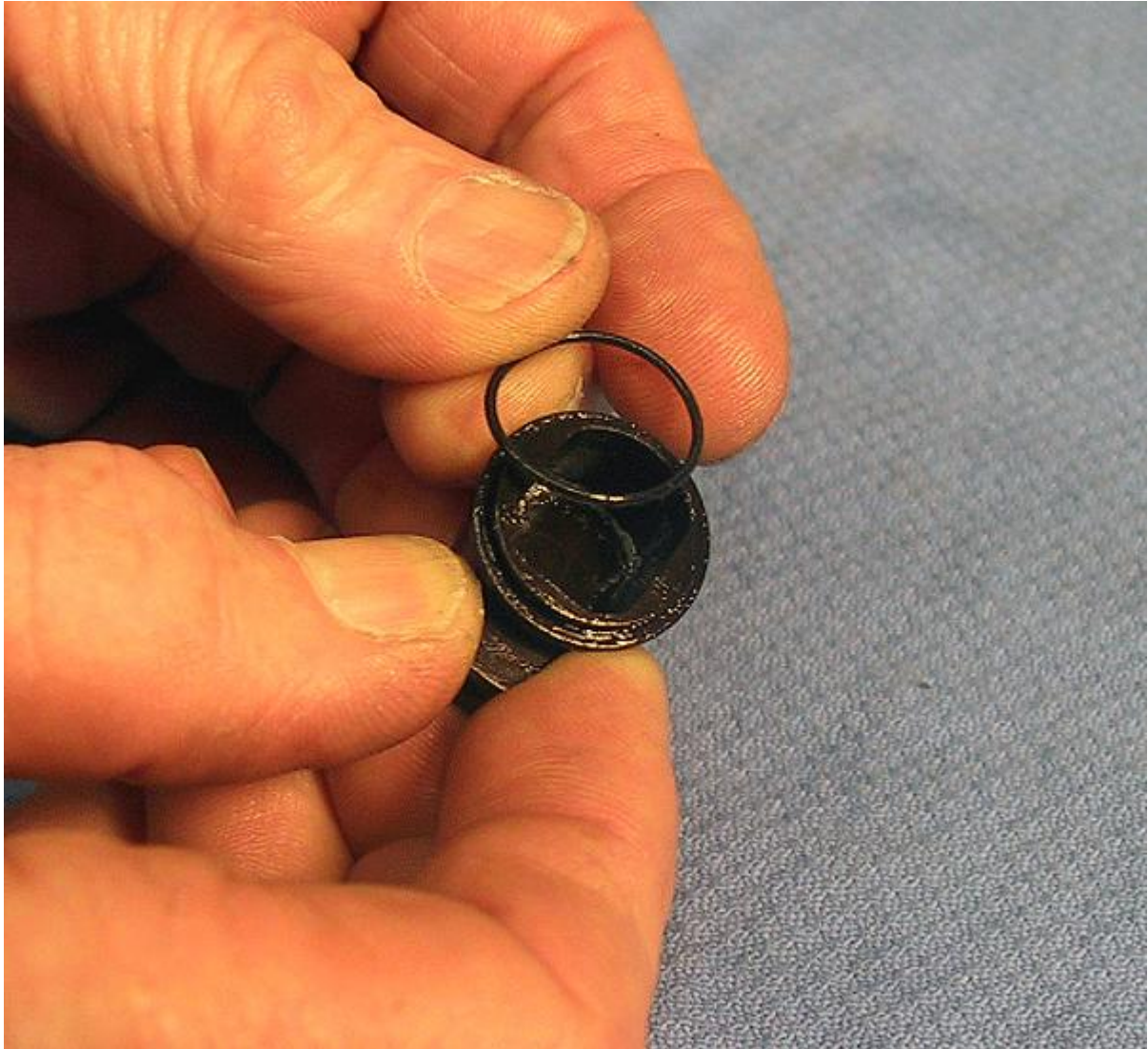


Figure 65: No Cable Housing Cap at Cam Assembly End



Inspect the large cam housing o-ring (PN 029-08-040) for signs of excessive wear, cuts, or failure. If replacement is necessary, lightly grease and install a new cam housing o-ring (PN 029-08-040) onto the cam housing.

Figure 66: Installing the Cam Housing O-ring



Lightly grease and install the upper cam return spring (PN 039-00-153) into the upper cam (PN 210-22-361).

Figure 68: Upper Cam Subassembly



Lightly grease the upper and angled surfaces of the upper cam, before installing the return spring and upper cam subassembly into the cam housing.

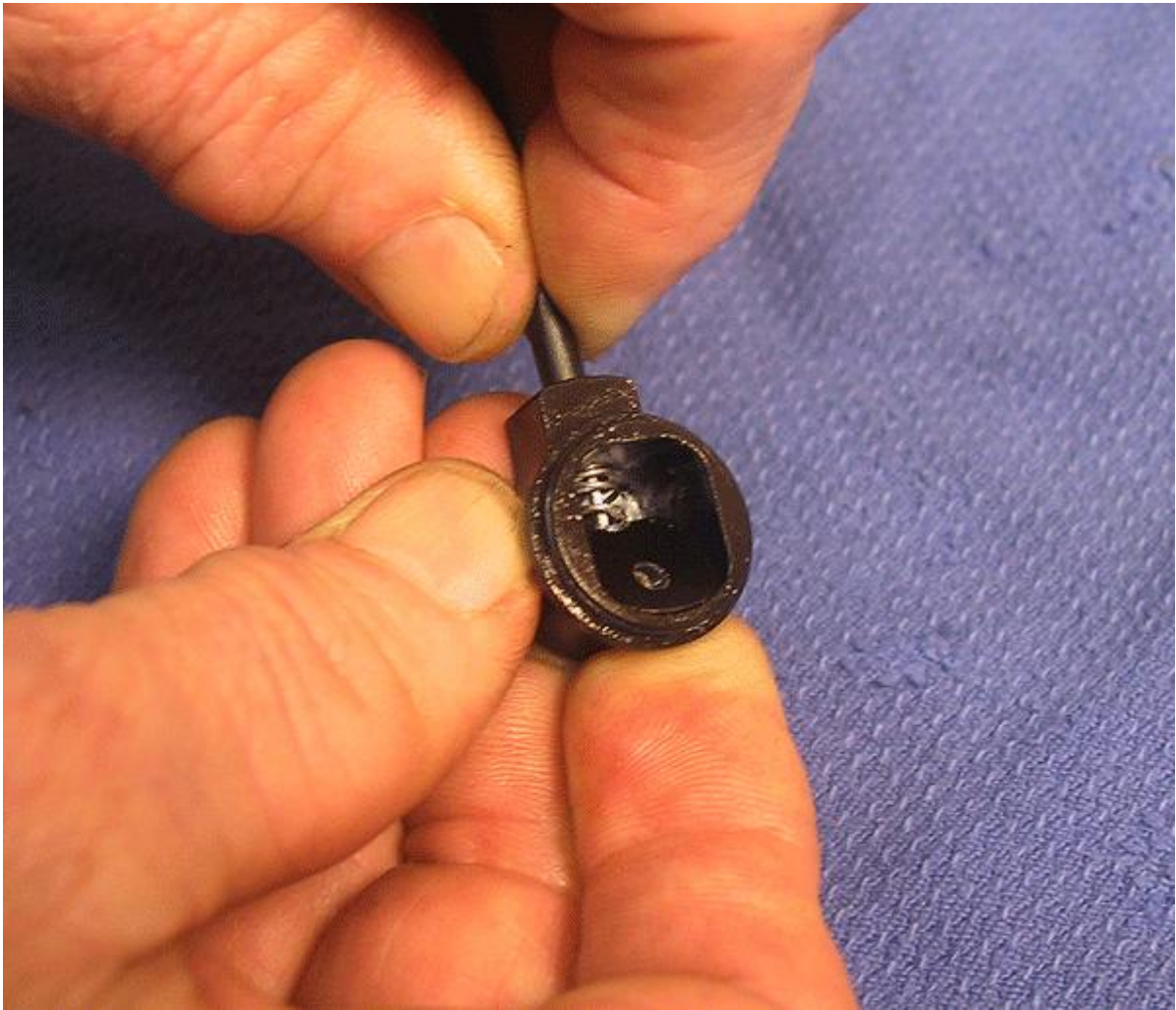
Figure 69: Grease Upper Cam Subassembly





Install the control cable with housing, inserting the 0.640" of inner cable through the upper cam return spring. Gently press until you feel the cable housing pass through the sealing o-ring (PN 029-08-108) and seat into place.

Figure 71: Installing the Control Cable into the Cam Housing



Tighten the control cable fastener screw to five (5) in-lb torque with a 1.5 mm hex key driver.

Figure 72: Installing the Control Cable into the Cam Housing



You can quickly test the cam assembly by activating and releasing the **remote** lockout lever, as shown in the following two pictures below. Notice the difference in cam position.

Figure 73: **Remote** Lockout Test: Lockout Off

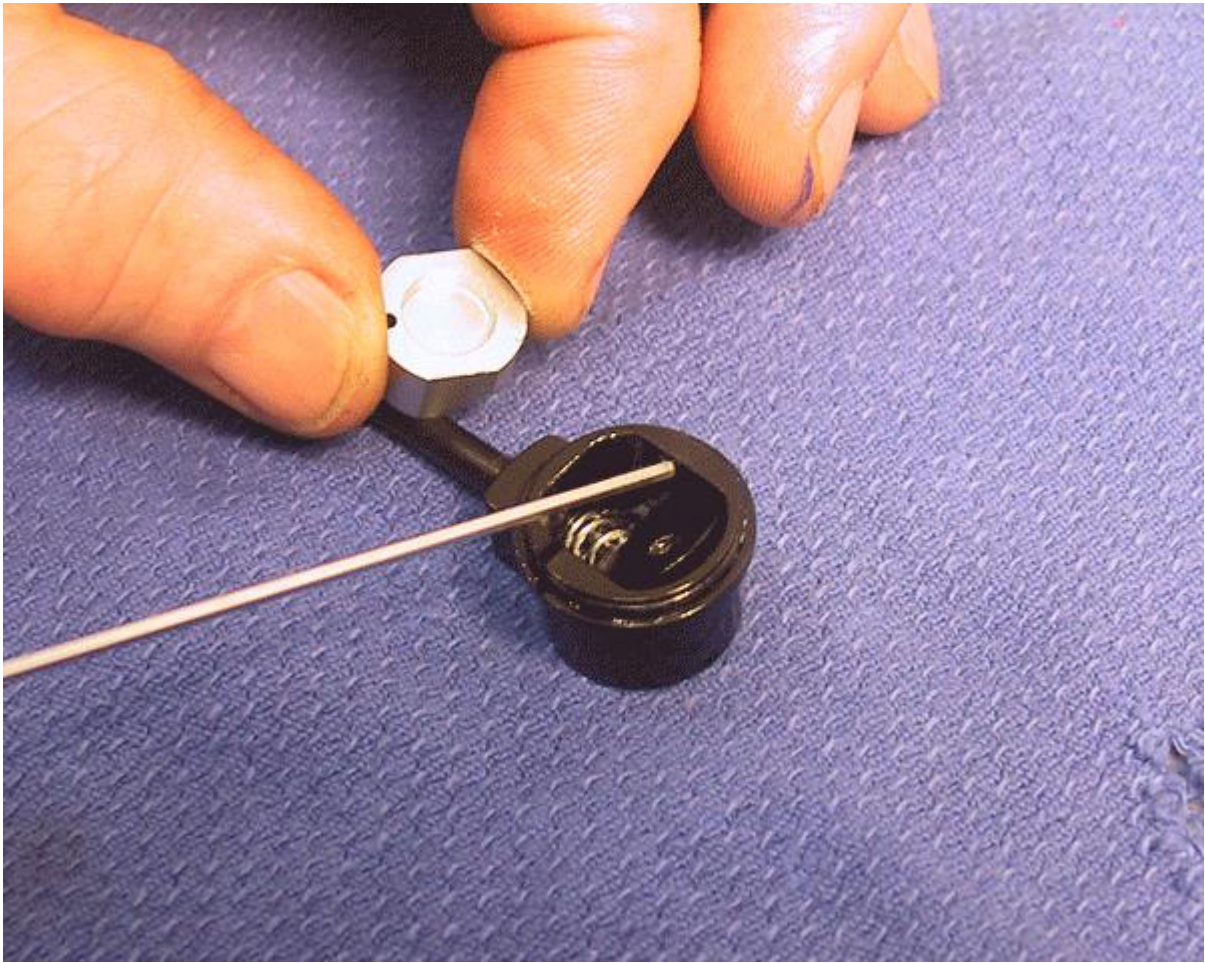


Figure 74: **Remote** Lockout Test: Lockout On



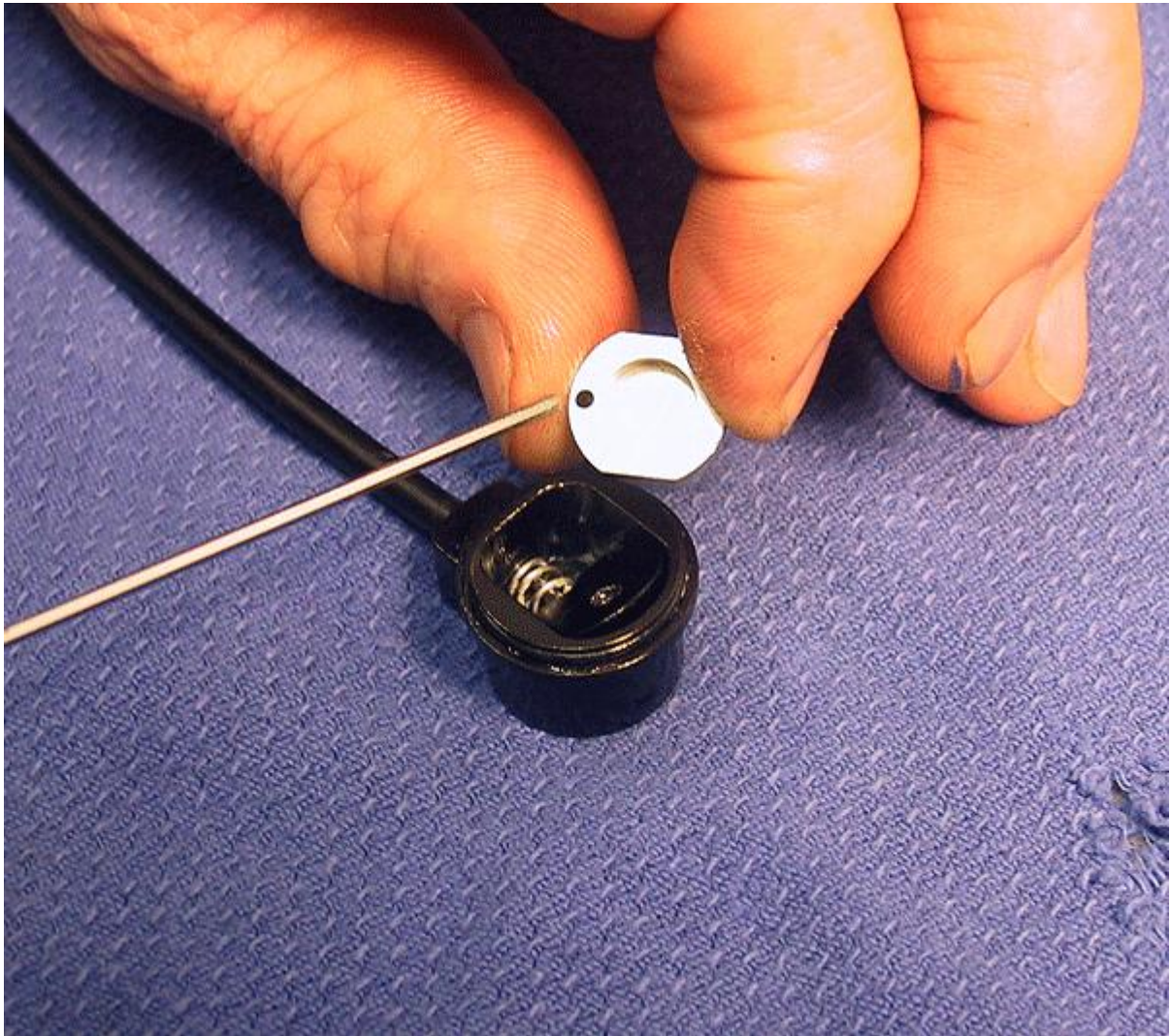
Lightly grease the lower cam and the inside of the cam housing. Align the flat faces on the lower cam with the straight sides of the cam housing.

Figure 75: Lower Cam Flats Alignment With Housing



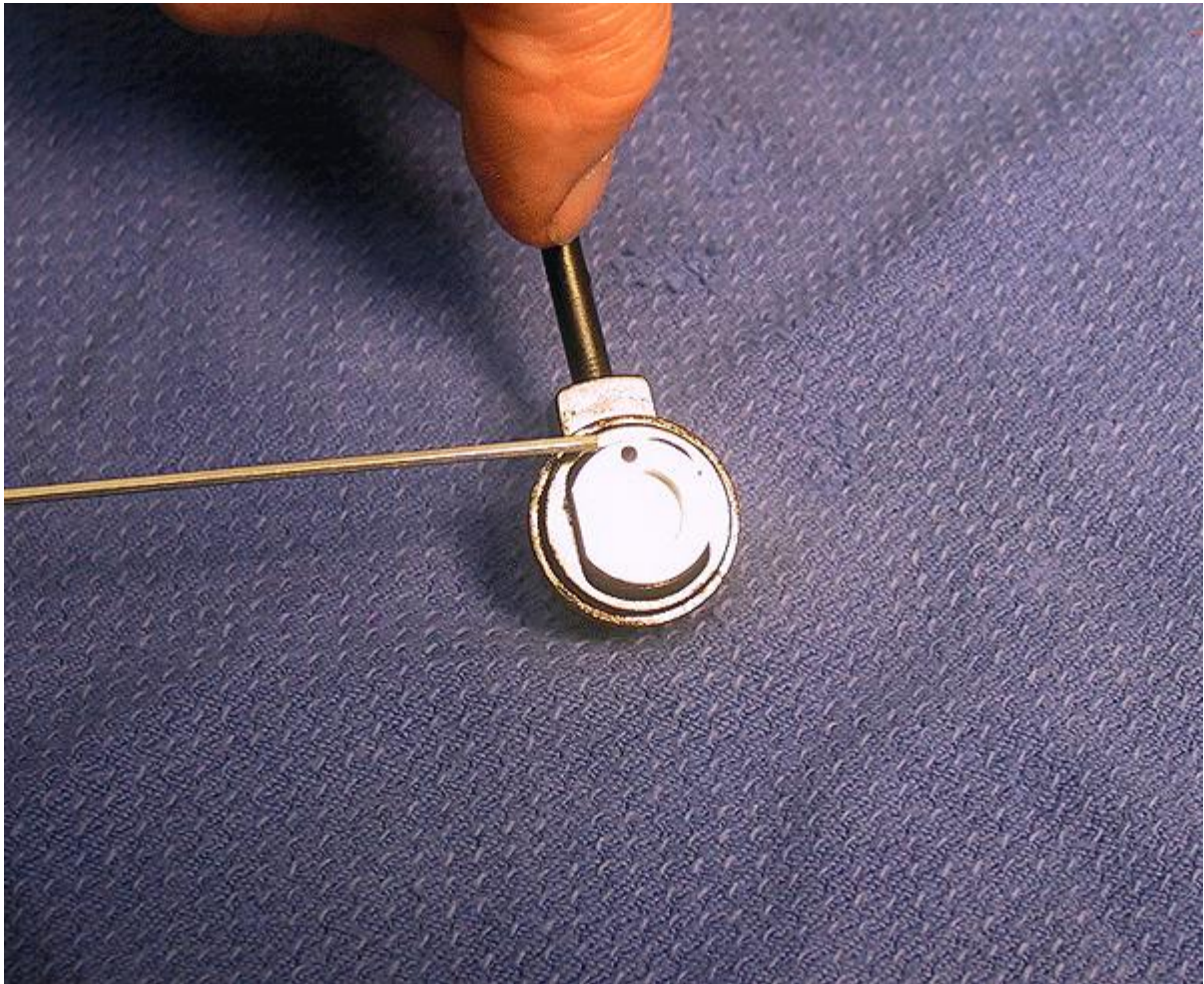
Point the lower cam guide hole towards the control cable, as you drop the lower cam into the cam housing.

Figure 76: Lower Cam Guide Hole Alignment



Notice how the flat sides of the lower cam align with the flat sides of the cam housing, and how the hole in the lower cam is toward and aligned with the control cable housing.

Figure 77: Lower Cam Guide Hole Alignment, Cont'd



Invert and place the cam assembly with control cable onto the topcap assembly of the installed damper.

Insert the screws (PN 019-01-034) and loosely fasten down the cam assembly. Rotate the cam assembly so the control cable contacts the fork crown, as shown below.

Figure 78: Installing the **Remote** Lockout Cable Assembly







- After ensuring the cable housing is properly aligned, tighten the screws down in sequence, to 0.75 in-lb each. Continue with the counterclockwise sequence tightening of the screws, until the final torque value of 1.5 in-lb for each screw is attained.

Figure 79: Secure the **Remote** Lockout Cable Assembly



- With the appropriate cable holder assembly ([820-00-204](#), 1 1/8" steerer; [820-00-278](#), 1.5" tapered steerer), hook the steel bracket around the cable housing located in front of the crown for the 1 1/8" steerer, or in back of the crown for the 1.5" tapered steerer.

Figure 80: Cable Housing With Cable Holder Assembly



- While keeping the cable housing inside of the hook on the steel bracket, place the nut (019-00-005) end of the assembly up into the steerer from the underside of the crown; see ["Cable Housing With Cable Holder Assembly"](#).

- Push the assembly in the steerer until the large washer (241-01-021) contacts the bottom of the steerer.
- Position the Cable Holder Assembly so that the cable housing runs parallel with the crown.
- While holding the front of the assembly to keep it from turning, tighten the M5 bolt (019-01-043) to 8 in-lb torque.