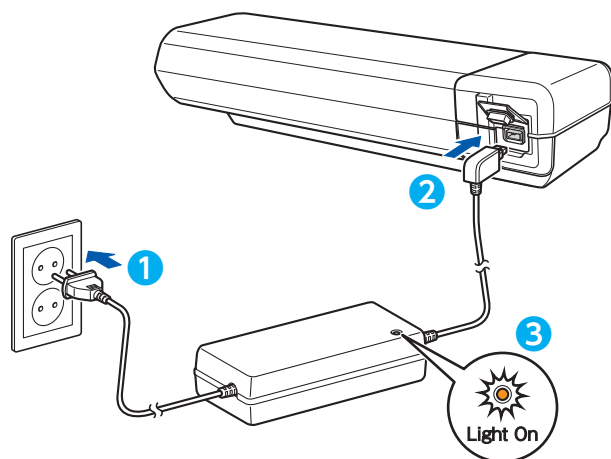


### ▲ IMPORTANT NOTICE

For safety, be sure to read user's manual thoroughly before use, and follow them for correct use.  
Visit our website at [si.shimano.com](http://si.shimano.com) for the detailed and latest information.

### 1 Charging the battery.



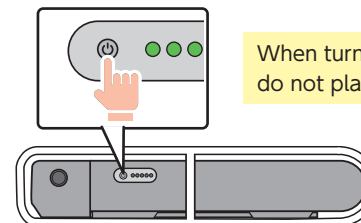
	Charging (Within 1 hour after the completion of charging)
	Charging error

It is possible to charge the battery even while it is mounted on the bicycle. See user manual for detailed.

### 2 Turn on the power.



2 sec or more



When turning the power ON or OFF, do not place your foot on the pedal.

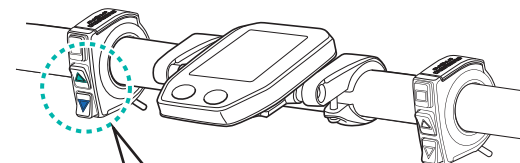
### 3 Ride a bike.

Assistance will start when the pedals start turning.

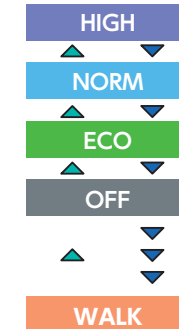
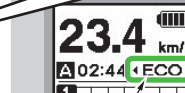
Assist  
Start



### 4 Select your preferred assist mode.



Current assist mode



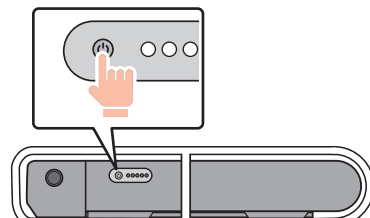
Assist-Y

Assist-Z

### 5 Turn off the power.



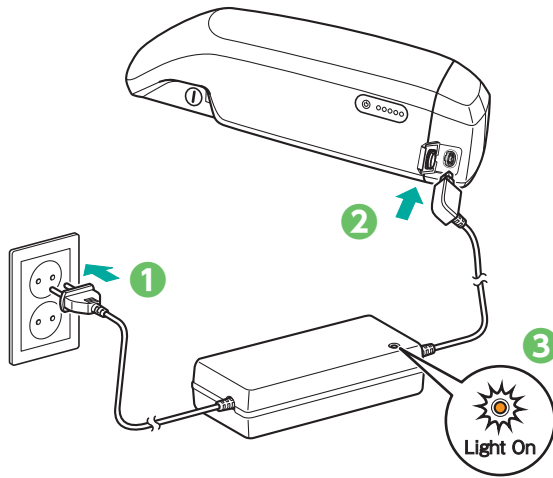
2 sec or more



### ▲ IMPORTANT NOTICE

For safety, be sure to read user's manual thoroughly before use, and follow them for correct use.  
Visit our website at [si.shimano.com](http://si.shimano.com) for the detailed and latest information.

### 1 Charging the battery.



	Charging (Within 1 hour after the completion of charging)
	Charging error

It is possible to charge the battery even while it is mounted on the bicycle. See user manual for detailed.

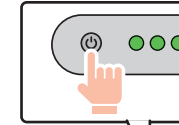
### 2 Turn on the power.



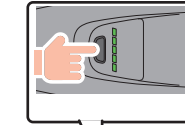
2 sec or more



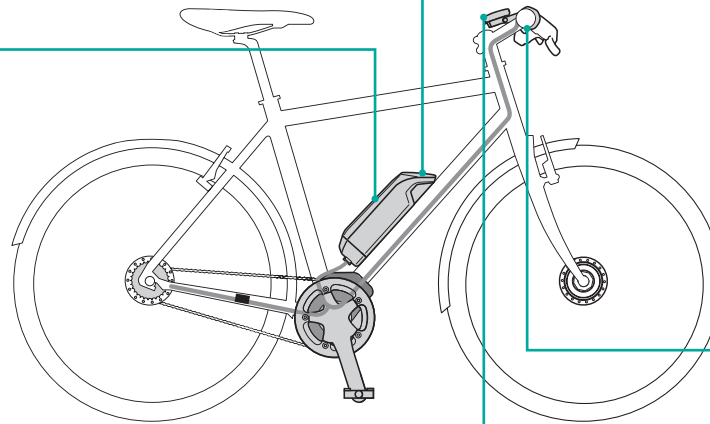
BT-E6010



BT-E8010



When turning the power ON or OFF, do not place your foot on the pedal.



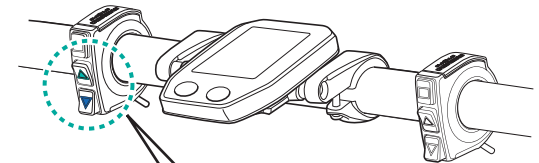
### 3 Ride a bike.

Assistance will start when the pedals start turning.

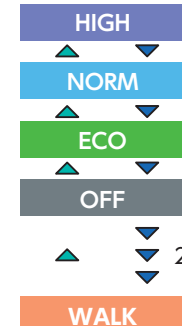
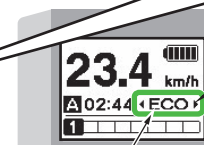
Assist Start



### 4 Select your preferred assist mode.



Current assist mode



2 seconds

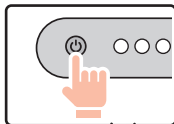


### 5 Turn off the power.

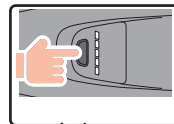


2 sec or more

BT-E6010



BT-E8010



When turning the power ON or OFF, do not place your foot on the pedal.