



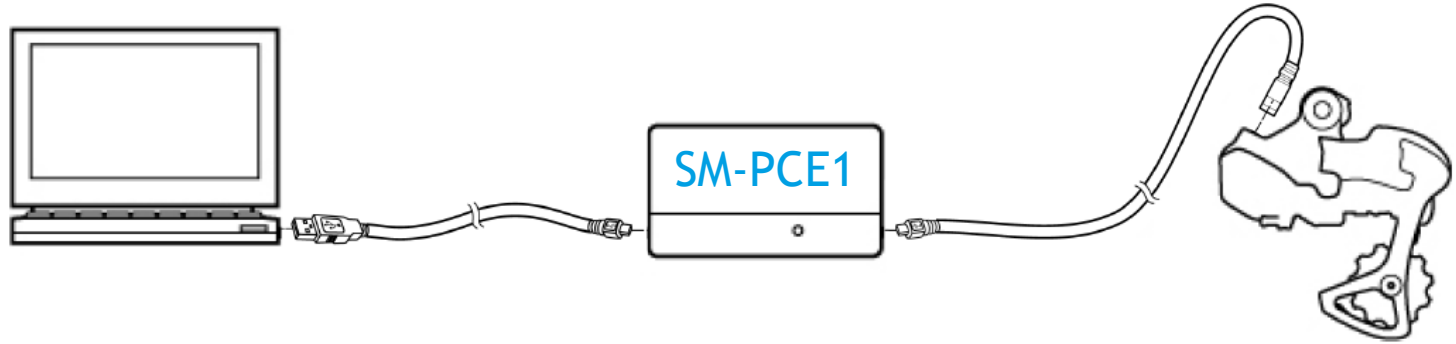
E-TUBE PROJECT

SINGLE UNIT CHECK

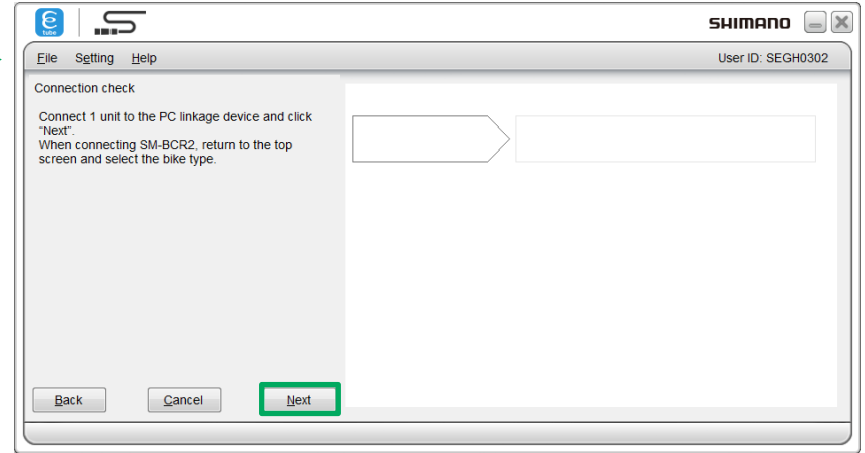
CONNECT ONLY ONE UNIT TO THE SM-PCE1



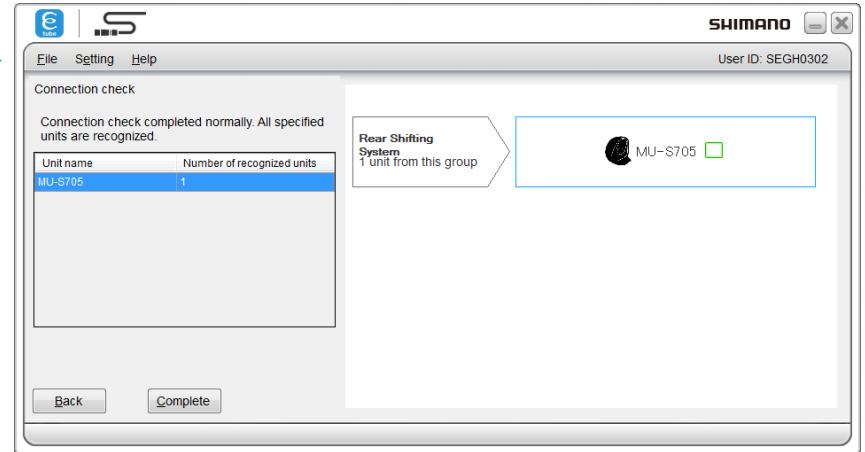
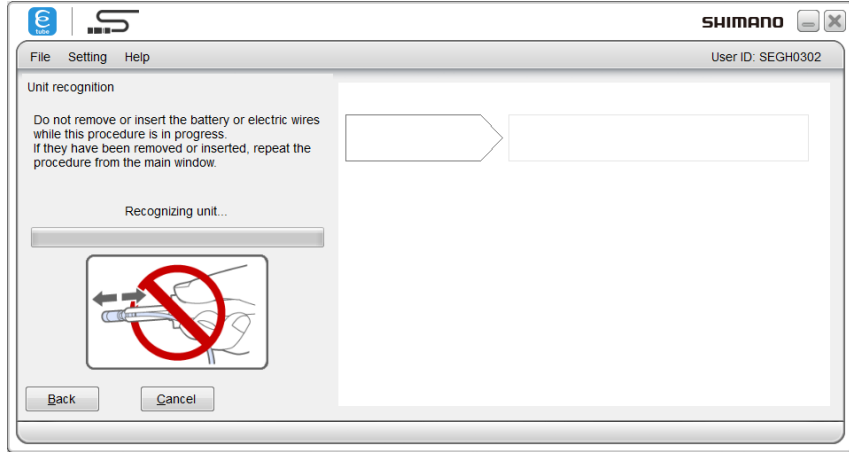
In case of SHIMANO STEPS drive unit: Also connect the battery to DU



CONNECTION CHECK WITH ONLY ONE UNIT



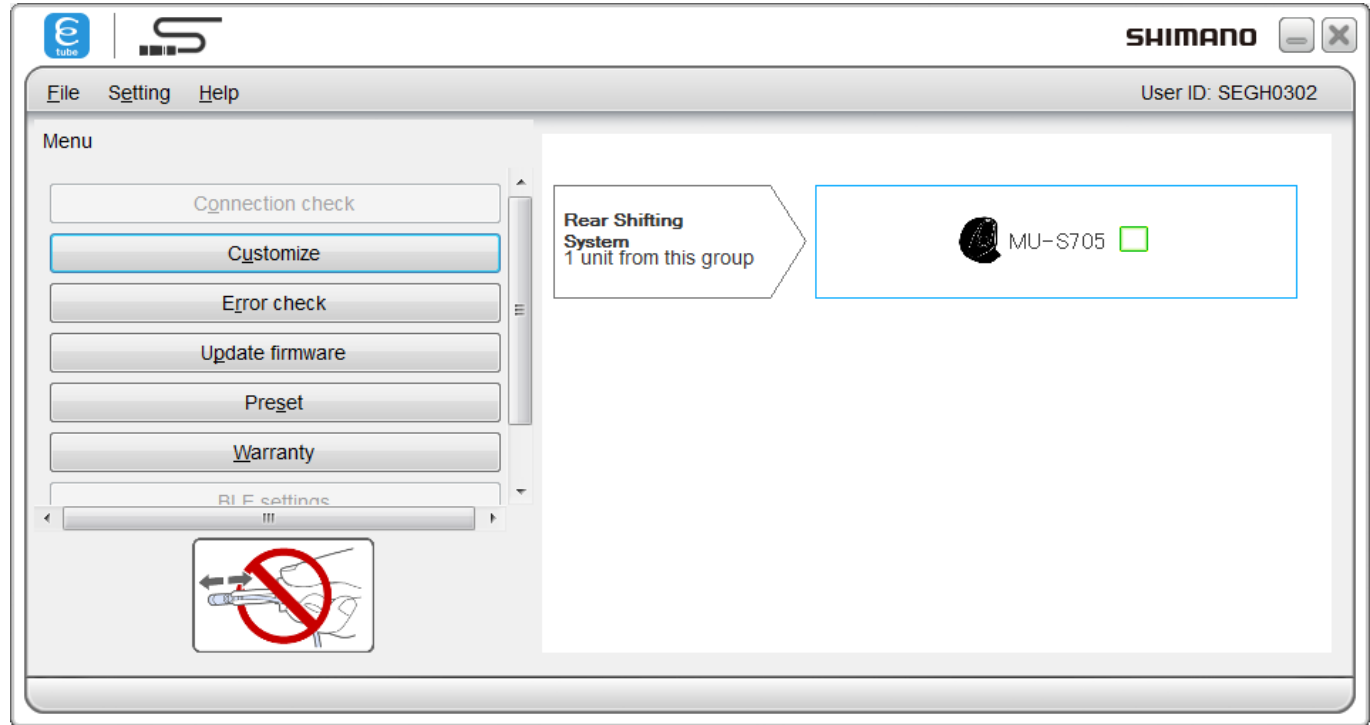
ONLY ONE UNIT WILL BE CONNECTED



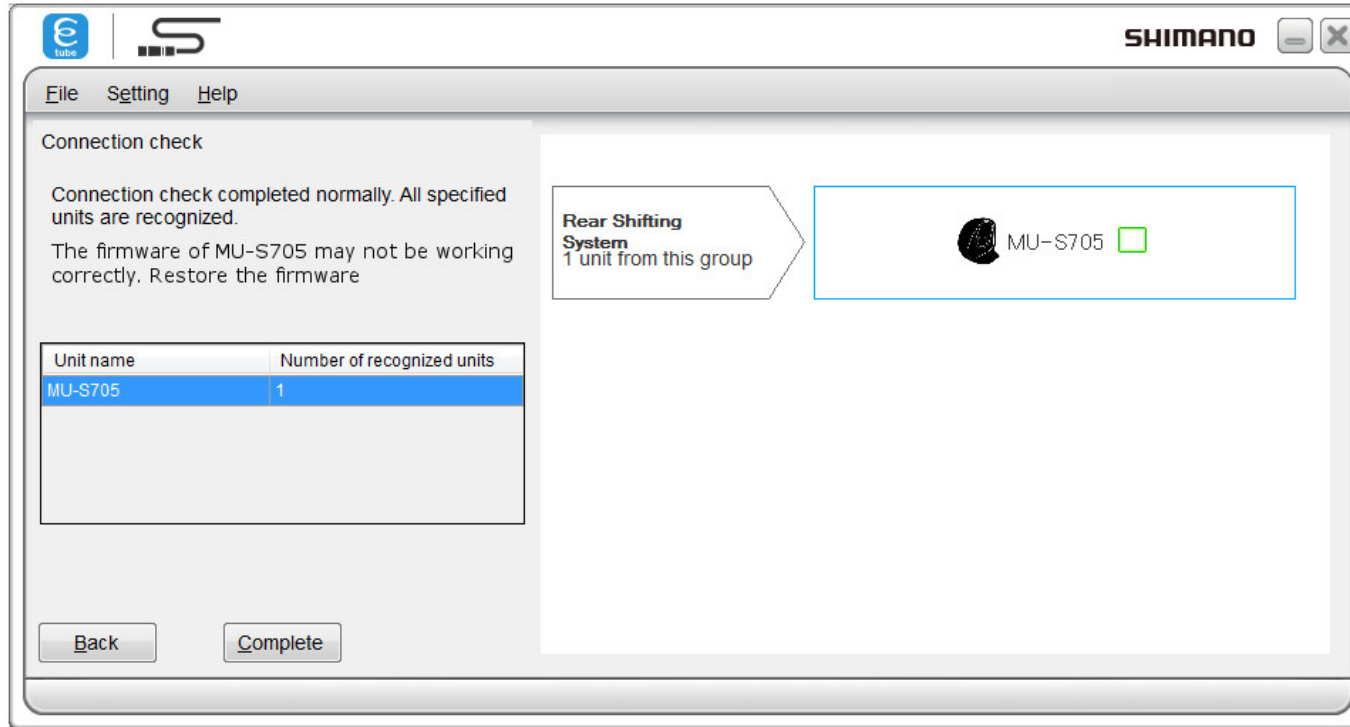
HANDLING OF A SINGLE UNIT



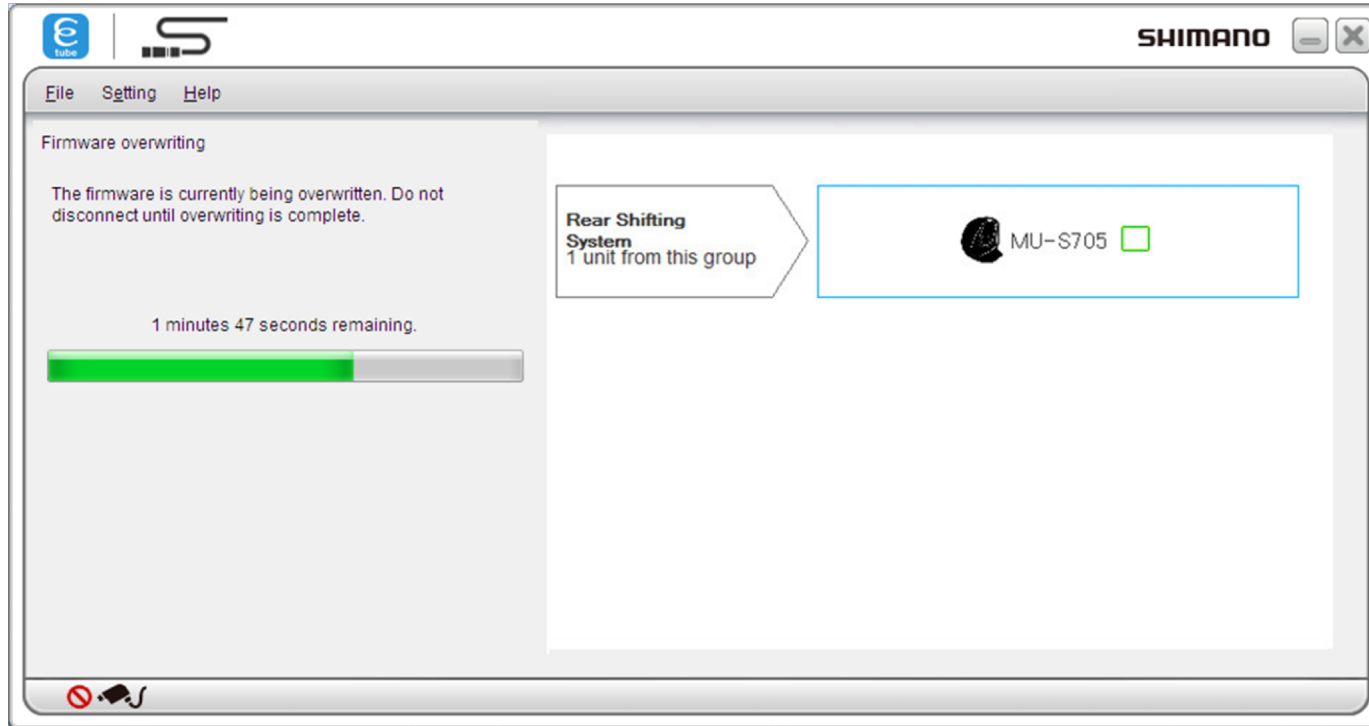
- Main menu is available
- Different menu points can be executed



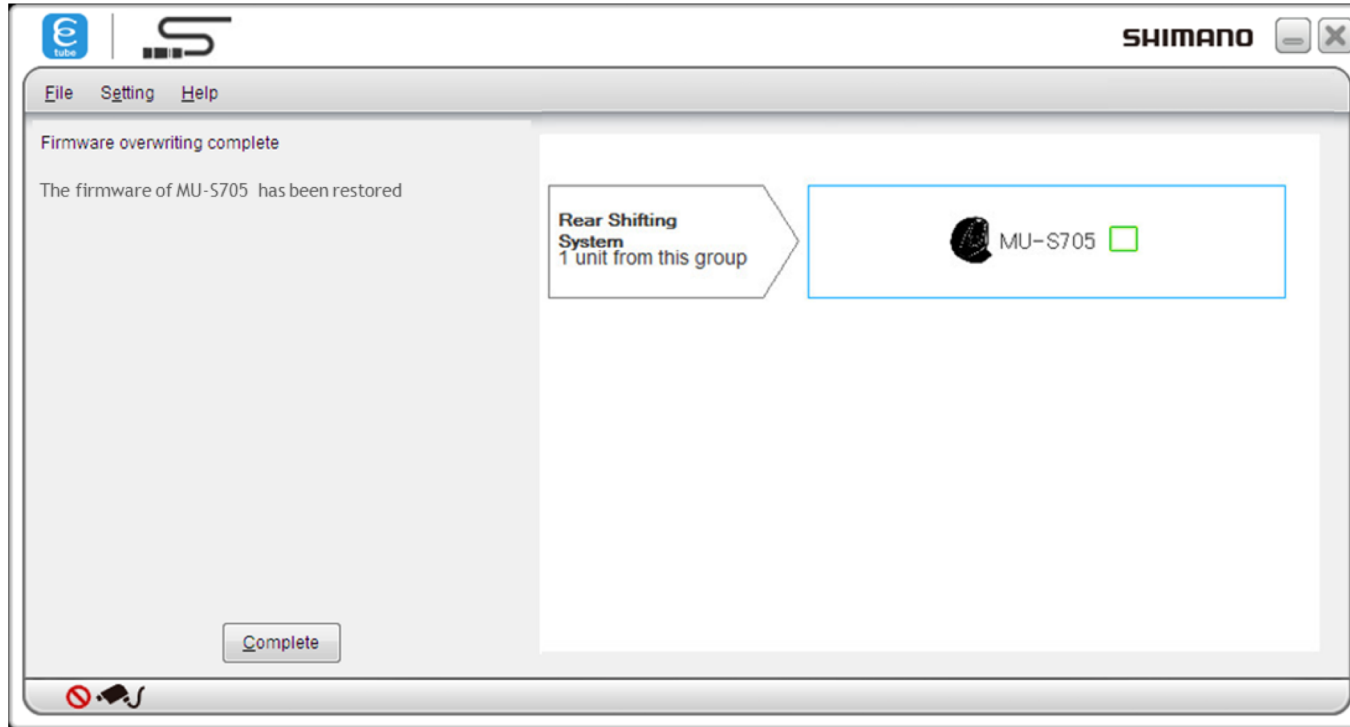
FIRMWARE RECOVERY (FIRST POSSIBILITY)



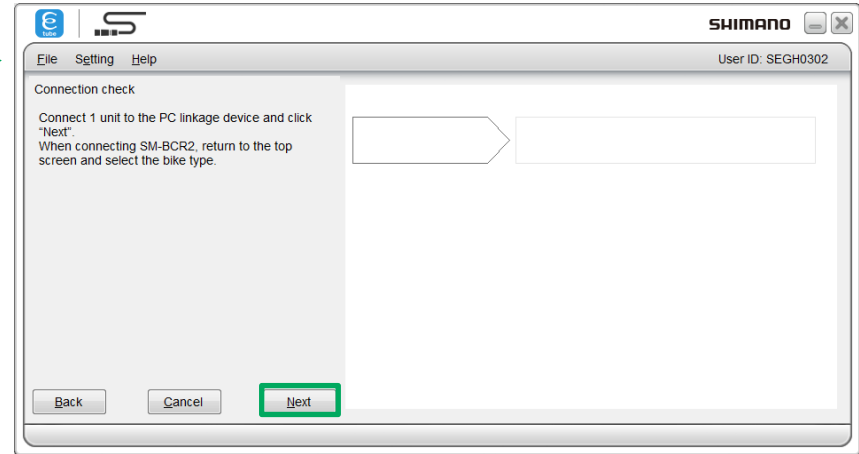
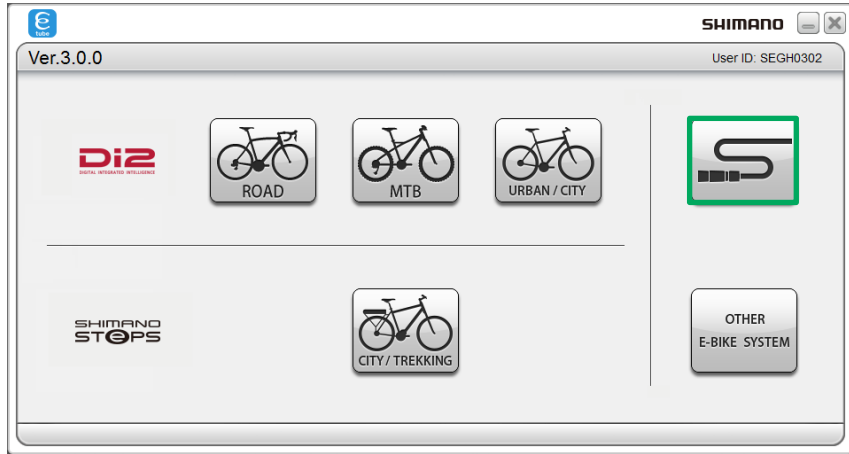
FIRMWARE RECOVERY (FIRST POSSIBILITY)



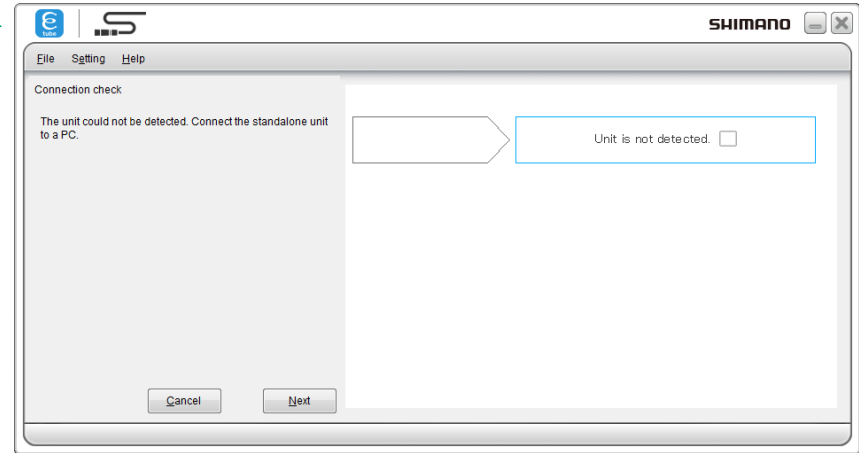
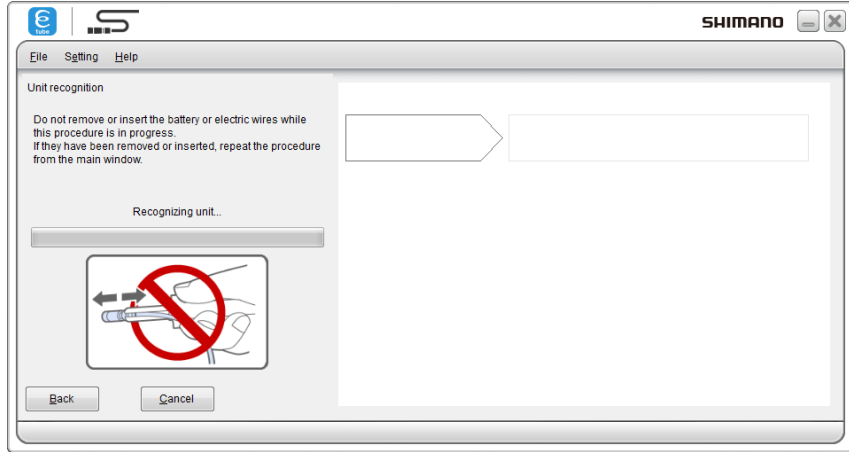
FIRMWARE RECOVERY (FIRST POSSIBILITY)



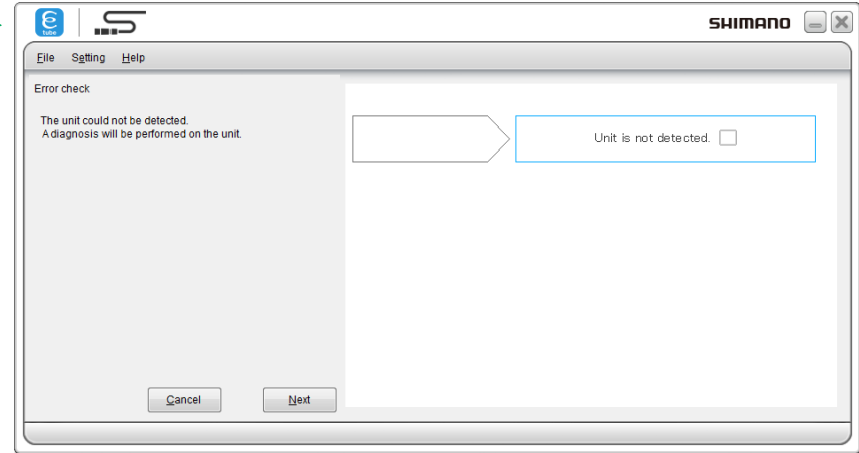
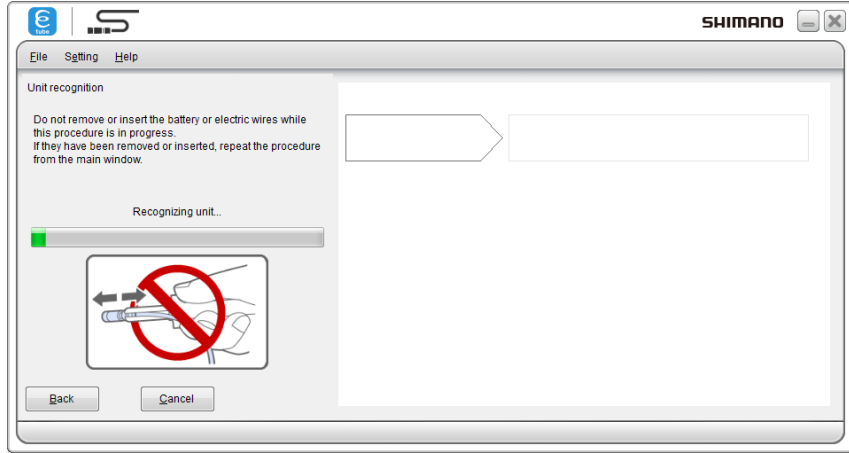
FIRMWARE RECOVERY (SECOND POSSIBILITY)



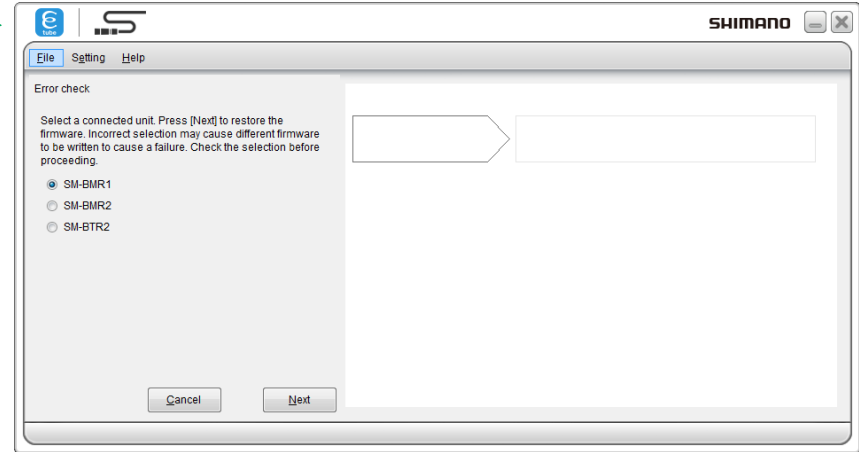
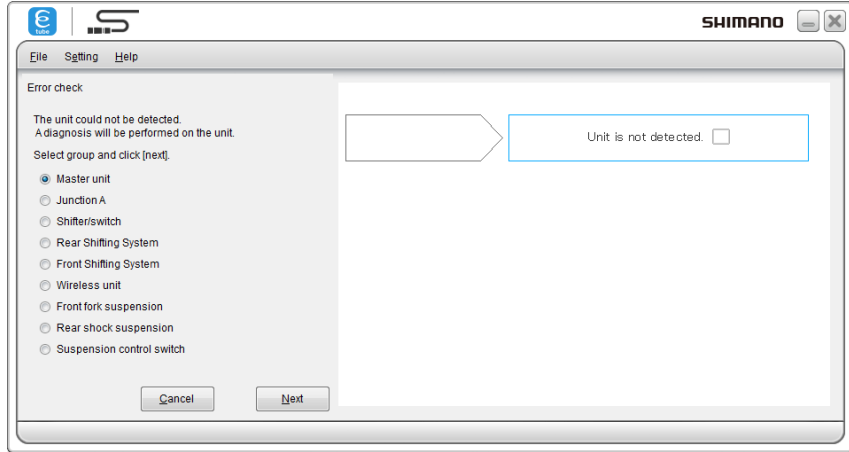
FIRMWARE RECOVERY (SECOND POSSIBILITY)



FIRMWARE RECOVERY (SECOND POSSIBILITY)



FIRMWARE RECOVERY (SECOND POSSIBILITY)



FIRMWARE RECOVERY (SECOND POSSIBILITY)

