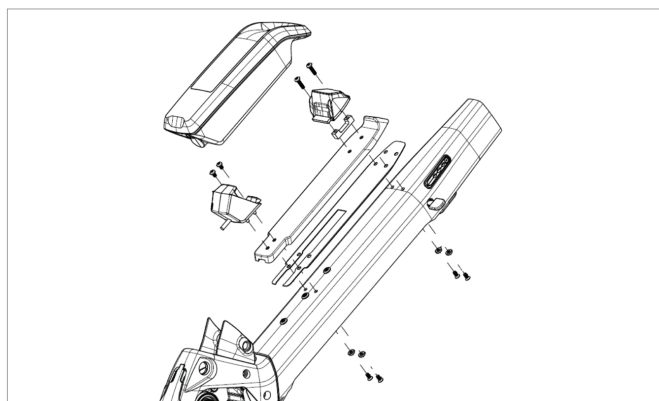


RANGE BOOSTER INFO

Info- Parts needed for MY20 eRide Genius/Strike/Axis Evo/Aspect

BOSCH PARTS	ABUS PARTS	SCOTT PARTS
Powerpack 500 - 0.275.007.529	ABUS / BLO BOS DT2 12_020 / Part-Nr. 6074	SCO E-MTB battery range booster - 275878
Battery mounting kit frame - 0.275.007.425	(Magura 2100702)	
Cable powerpack frame 220mm - 1.270.016.504		
Dualbat Y-adapter incl. Accessory kit 515 / 430mm 0.275.007.930		
Front housing kit - 1270.020.605		
Rear halter 0.275.007.426		

Compatible eRide SCOTT bike



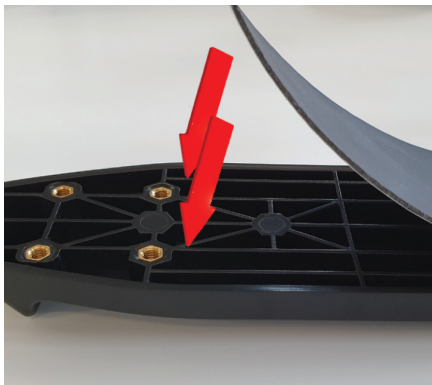
! Once the Range Booster is fitted only use your original bike charging port as not to damage your systems!

! Before carrying out any work on your SCOTT eRide please ensure the system is turned off completely!
Please use threadlock on all bolts !

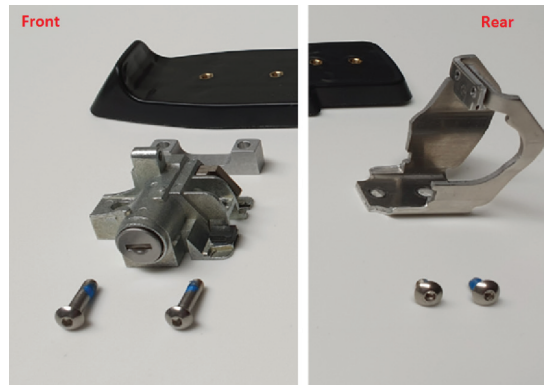
1. Remove wheels /
battery and stand.



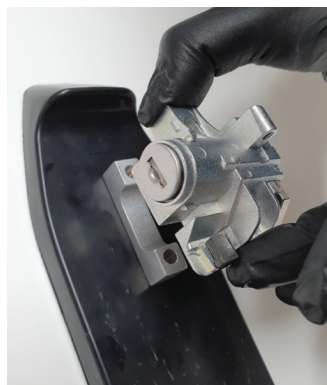
2. Stick protective rubber to
back plate.



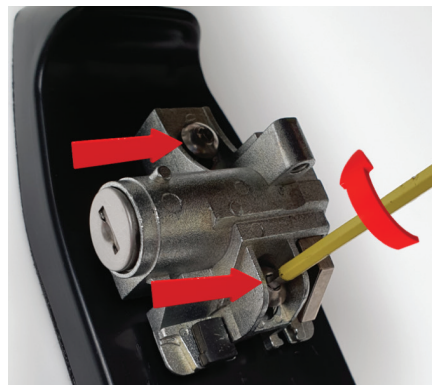
3. Position parts to front and rear of
mounting plate.



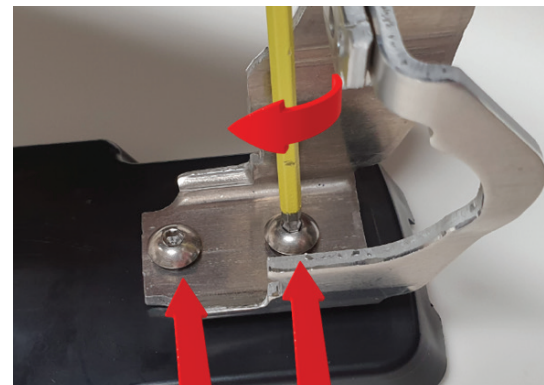
4. Insert the lock and spacer
to the plate, **!key to the left!**



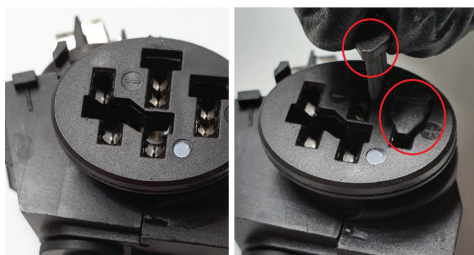
5. Fit and tighten both front screws.
5NM



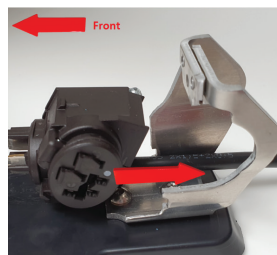
6. Repeat on the rear 5NM



7. Insert x2 rubber blanks in charge port



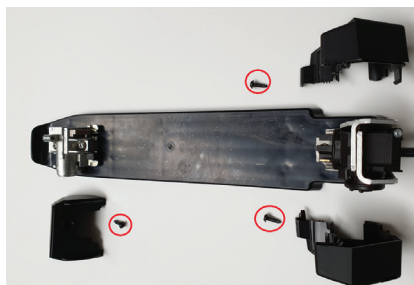
8. Insert wire 1270.016.504 from the front to rear, and locate housing.



9. Check battery attachment, adjust if need be following Bosch instructions.



10. Fit front and rear plastic covers with the 3 screws 4NM



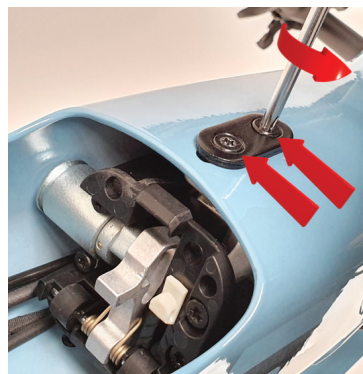
11. Refit battery, Inote! the battery needs to be fitted to the mount before fitting to the bike. Size small/medium it is not possible to remove the battery once fitted.



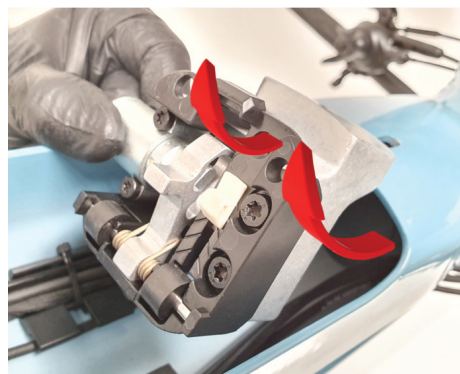
12. Unpeel the x2 rubber covers on the down tube.



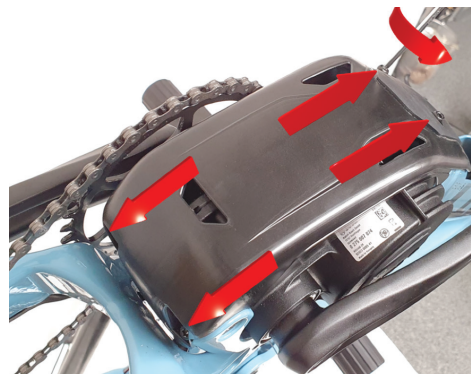
13. Remove both screws under the down tube (top end)



14. lift out the lock unit



15. Remove x4 motor cover screws.



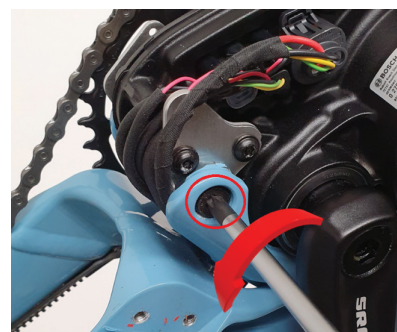
16. Lift of the motor cover.



17. Remove the forward motor bolts (x2 per side).



18. Slacken the rear motor bolt (do not remove).



For full suspension bikes please follow the below, for hardtail bikes please refer to sections A/B/C/D/E/F at the end of the chapter missing sections 20/21/22/23/28/29 (marked in red)

- 19.** Rotate the front of the motor away from the frame



- 20.** Rotate the front of the motor away from the frame



- 21.** On the underside of the shock rubber a indentation.



If your bike is XS/S for items 25/26/27 only loosely fit as you will need to remove the battery again

- 22.** open this area with a sharp point



- 23.** Cut the rubber from the side to the hole.



- 24.** Slide the battery and the holder over the down tube.



- 25.** Ensure mounting bolts/ washers are fitted as shown



- 26.** Fasten the battery to the down tube loosely with all 4 screws, this will need to be removed later. 5NM



- 27.** Route the cable from the battery through the shock hole.



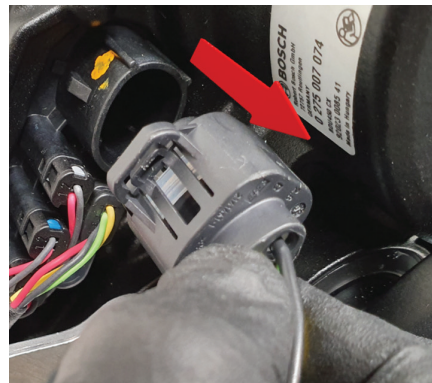
28. Refit the shock rubber and shock cable.



29. Refit the shock.



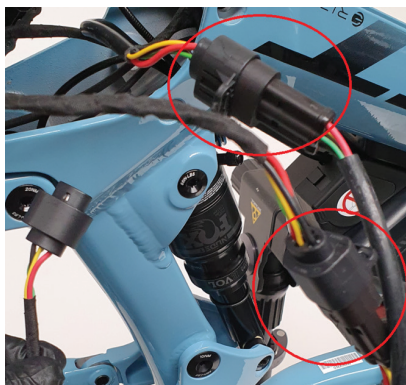
30. Unplug the battery cable from the rear of the engine



31. Pull the battery cable to the front of the motor.



32. Connect both battery cables to Bosch Y cable 0275.007.930. This is the cable from the boost and original battery.

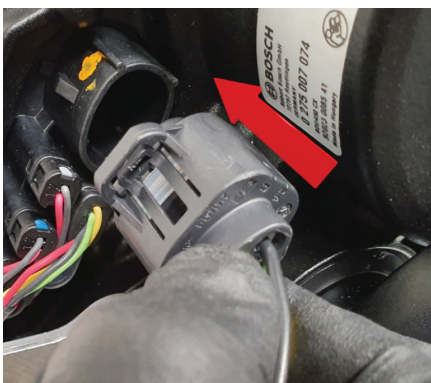


33. Pass the remaining Y connector back between the motor and frame. **!DON'T CONNECT TO THE MOTOR!**



!!If your bike is size L/XL remove the range booster battery only!!
If your bike is size S/M you must remove the battery and base plate from the bikes.
Then remove the battery from the base plate before continuing with the next step.
It is very important the battery is not connected to the system when the motor is connected.

34. Connect the end of the "Y" cable to the motor.



35. Any extra cables slide up inside the seat tube.



36. Refit motor and tighten all motor bolts (both sides). 20NM.



For L/XL bikes refit your Range booster battery.
For S/M size frames refit the battery to the base plate and refit the plate as in 23/24/25 and tighten correctly.

37. Refit battery lock. 5NM



38. Refit battery and adjust if need be following Bosch instructions.



39. Fit “No Charge” decal over the additional charge port on the boost battery



40. Refit motorcover/stand/wheels and check bikes operation.



Additional
For hardtail MTB eRide cable routing please follow:

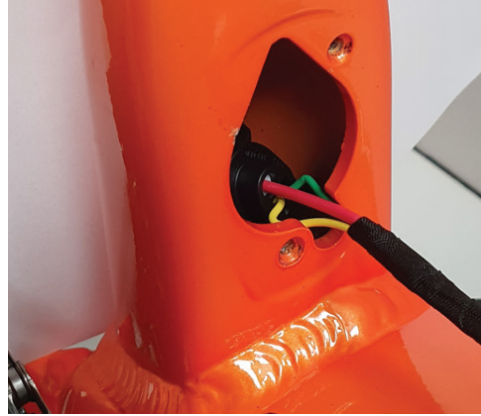
A: Rotate or remove the rubber charge cover



B: Remove charging plug.



C: route the cable.



D: Refit the charging plug 4NM



E: Cut the rubber charging cover to suit where the slot in the frame is.



F: Refit the charging plug and go back to step 29

