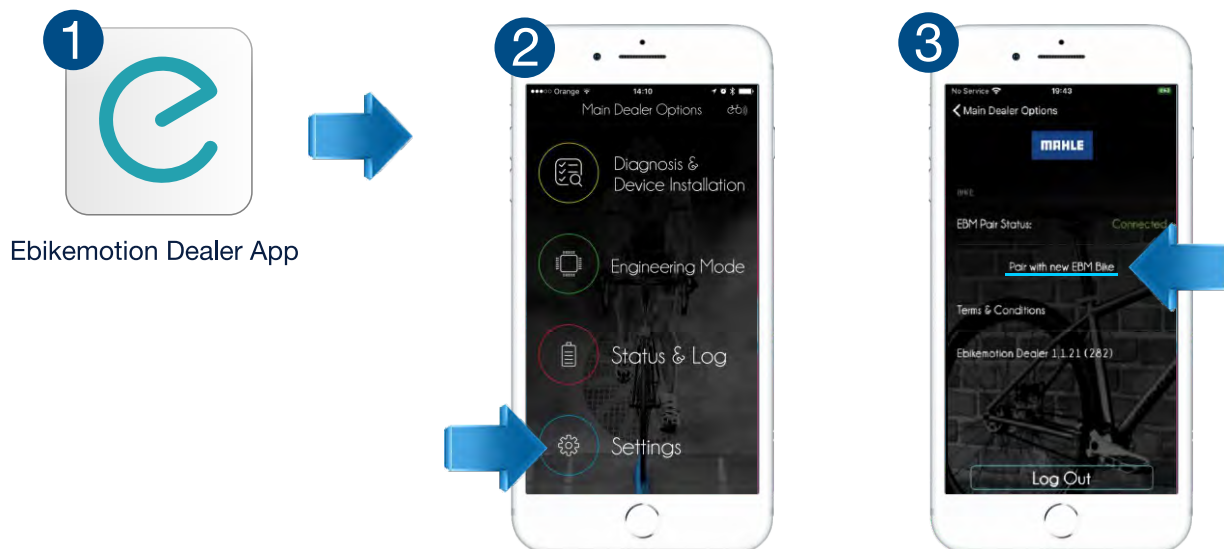
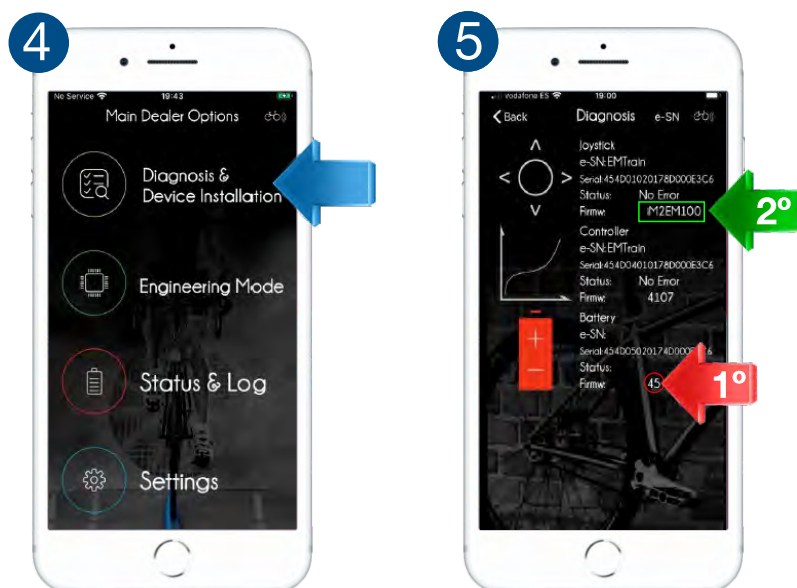


## FW DIAGNOSIS BY DEALER APP

1. Open the Ebikemotion dealer app. Make sure bluetooth and location is activated.
2. Click on the settings menu.
3. Pair to ebike.



4. Start diagnosis.
5. Check the version of the battery with dealer app.
6. Initiate the instructions



1°. If you have "Battery > Fw" 45, you battery is eligible of update. If not, troubleshooting is done.

2°. Check the value of "Joystick > Fw":

**A. If = iM2EM101 or iM1EM201**

- Troubleshooting is done, your battery is updated.

**B. If = iM2EM100, iM1EM11B or iM1EM116**

- Use Battery Fw update pack.

**D. Else**

- Call MAHLE ebikemotion Customer care department.

Detailed content of update package for battery "Error 201"

- GCU software upgrade.
- Controller FW update.