



PATRON MY22

TECH MANUAL



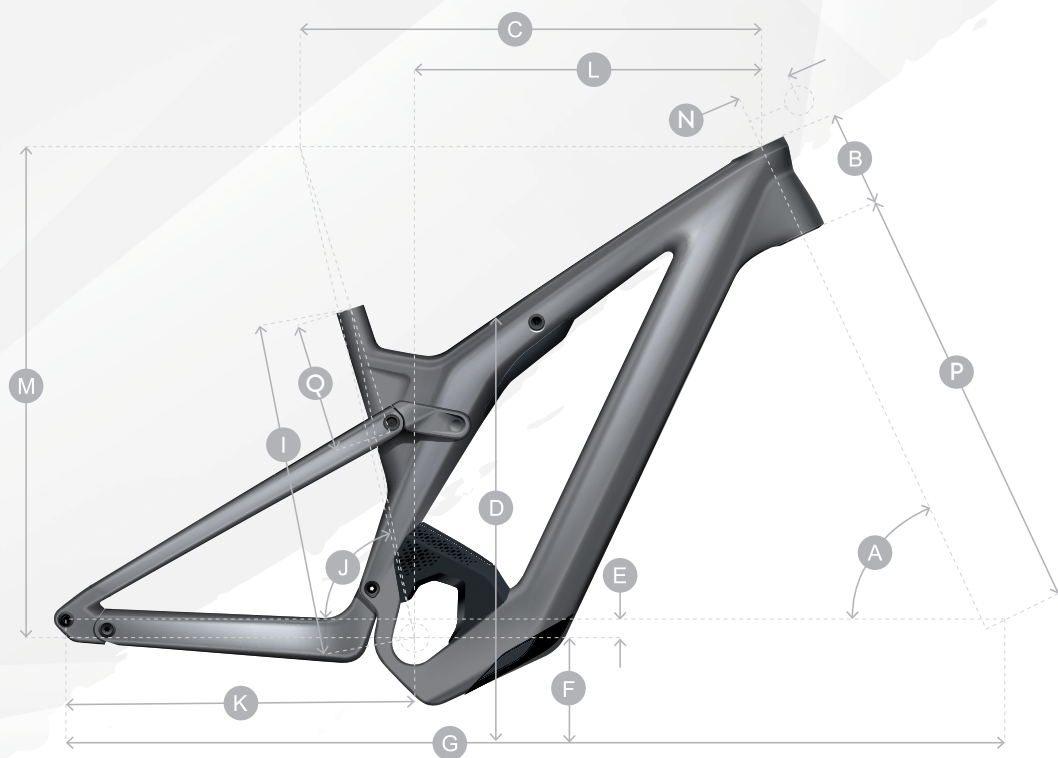
Technical Data:

Seatpost:	31.6 mm
Seatpost Clamp:	34.9 mm
Travel:	160 mm F & R
Shock Length:	205 mm E2E
Shock Stroke:	60 mm
Hardware M/Frame:	Trunnion
Hardware Linkage:	17 x 10 mm
Chainring Max:	38 T
Chain Line:	52 mm
Tyre Width Max:	2.6"
Max / Min Rotor:	203 Only (no special mount)



Tyre sizes often vary from brand to brand. Always ensure the frame, linkage & swingarm tyre clearance is adequate when replacing the rear tyre.

Geometry:



MY22 Patron eRIDE

	Small	Medium	Large	X/Large
A HEAD TUBE ANGLE	64.5°	65°	65°	65°
B HEAD TUBE LENGTH	120 mm	125 mm	135 mm	145 mm
C TOP TUBE HORIZONTAL	579.4 mm	595 mm	625.6 mm	656.4 mm
D STANDOVER HEIGHT	766 mm	766 mm	766 mm	766 mm
E BB OFFSET	-30.0 mm	-30.0 mm	-30.0 mm	-30.0 mm
F BB HEIGHT	347 mm	347 mm	347 mm	347 mm
G WHEEL BASE	1221.7 mm	1231.7 mm	1263.7 mm	1295.4 mm
I BB CENTER TO TOP OF SEATTUBE	410.5 mm	440.5 mm	470.4 mm	500.4 mm
J SEAT ANGLE	77°	76.9°	76.9°	76.8°
K CHAINSTAY	454.0 mm	454.0 mm	454.0 mm	454.0 mm
L REACH	432.7 mm	445.8 mm	473.6 mm	501.2 mm
M STACK	634.8 mm	642.2 mm	651.3 mm	660.4 mm
N STEM LENGTH	50 mm	50 mm	60 mm	60 mm
P FORK LENGTH	567.1 mm	567.1 mm	567.1 mm	567.1 mm
Q MAX POST INSERTION	245 mm	265 mm	300 mm	320 mm
CRANK LENGTH	165 mm	165 mm	165 mm	165 mm
TRAIL	133.3 mm	129.5 mm	129.5 mm	129.5 mm

PLEASE TAKE NOTE OF THE BELOW ICONS THROUGHOUT THIS MANUAL FOR SAFE PRACTISE



EASY TECHNICAL STEP



IMPORTANT TECHNICAL STEP
(Take your time, get it right)



NO GREASE

WITH GREASE



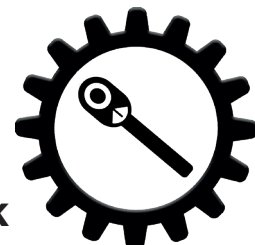
THREADLOC

BEARING FIT



WARNING/CAUTION

TORQUE CHECK



Fenders & Carriers:

The Patron can be equipped with a kickstand, rear fender and rear rack.

265597 SYN Kickstand Fully E-MTB 2 bolts

288545 SCO Rear rack AXIS eRide Evo SnapIt 2.0

280312 SCO Rear fender stays Strike/AXIS ER Evo

280311 SCO Rear fender Strike /AXIS E-Ride Evo
(front fender not possible to mount to fork arch)

Hangers & Axles:

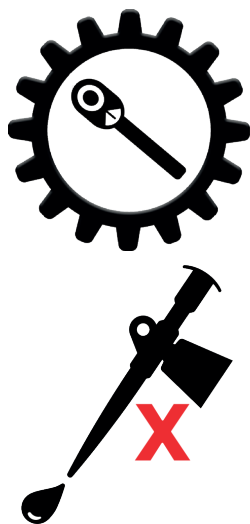
The Patron has only one rear hanger, this is the SRAM UDH.

This is available from your SRAM supplier, it is only available via Scott if you do not have a supplier in your region.

286000 - SCO Dropout Sram UDH 21



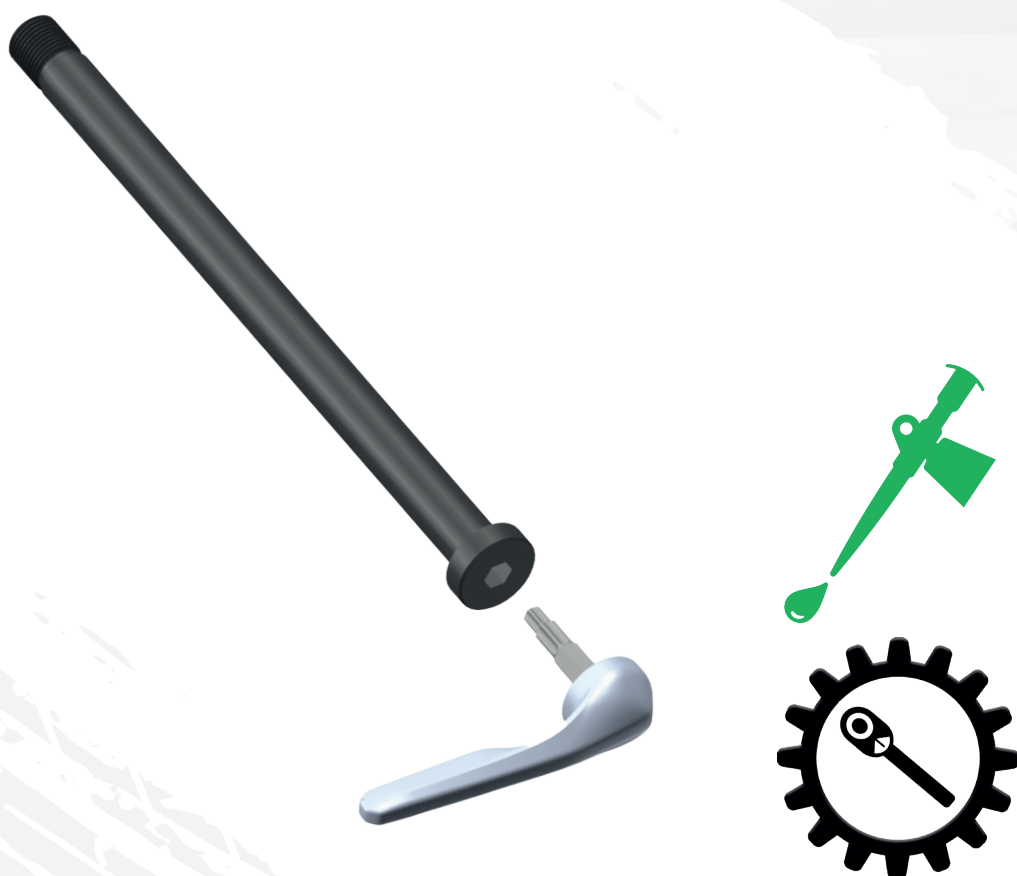
The UDH must be assembled without grease to a torque of 25Nm reverse thread



The new rear axle is the same as the Spark and contains a “plug in” tool T30/T25 and M6 Hex key:

290016 - SCO Axle RWS Rear 148x12 Spark Plug 22

The Axle must be assembled with grease, and torqued to 10Nm.



Maximum Seatpost Insertion:

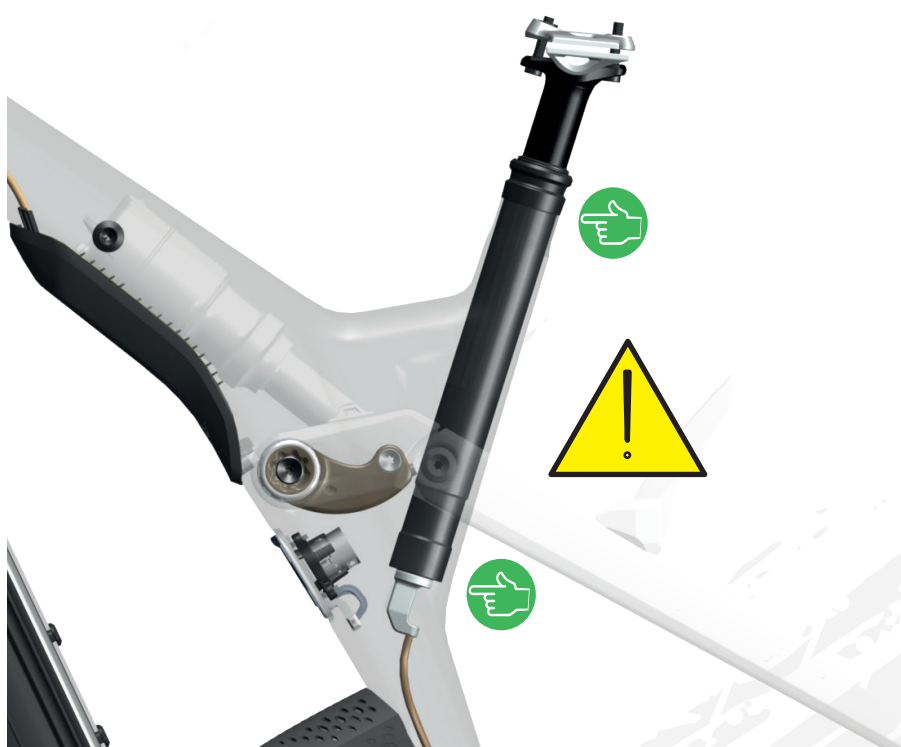
Is the same for both carbon and alloy front triangles.

S= 245mm

M=265mm

L=300mm

XL=315mm



Cockpit:

The Patron has the new E-bike specific Hixon Handlebar with integrated cable routing:

292623 SCO eRIDE Bar SY Hixon IC Patron Wty 22

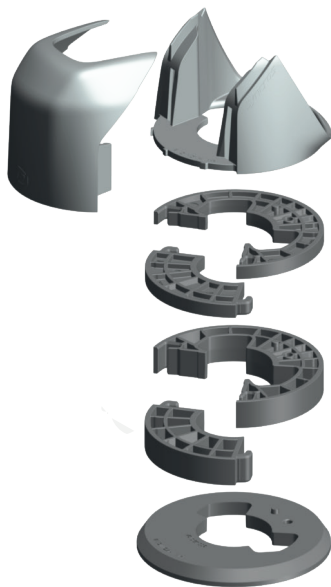
The Patron Headset will be:

288252 SYN Headset ZS66/28.6 - ZS66/46

There is a new spacer kit for the Patron Stem and handlebar:

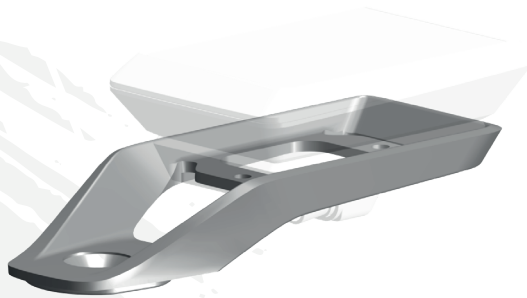
Spacer kit will include Stem and Top cover, headtube cover and 2pcs of 5mm and 3pcs of 10mm spacers. Not cross compatible with spark.

292642 SCO Stem spacer kit Patron 22



There will be a new Kiox holder for the MY22 Hixon IC eRIDE handlebar:

292691 SCO eRIDE Kiox mount Hixon IC 22



Cable Guides & Covers:

The Patron cable routing is internal, the following guides and covers are available:

Chainstay Protector:

292692 SCO eRIDE CST protector Patron 22

Main Pivot cover:

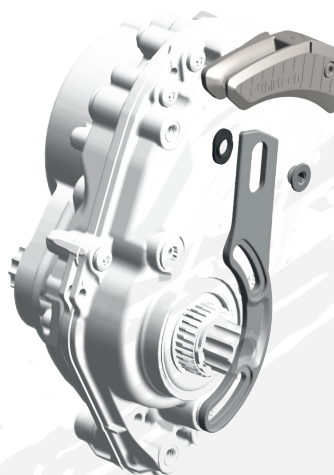
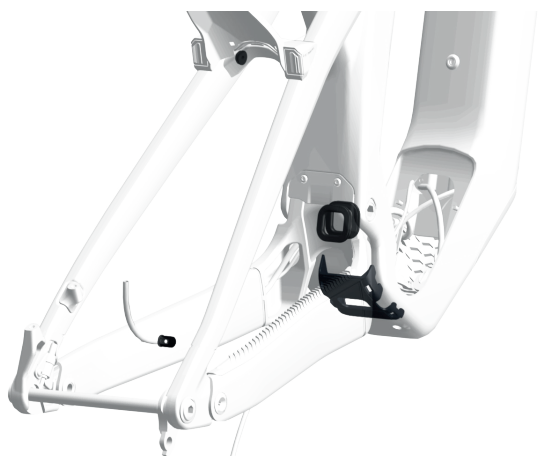
292633 SCO eRIDE M/P cover Patron 22



Cable Guide Kit & Chain Guide.

294279 SCO eRIDE cableguide set Patron 22

294278 SCO eRIDE Chainguide Patron 22



The Patron Features the new thinner cable housings from Jagwire. We have them as a set available in markets with no Jagwire service. Each kit contains 3 cables and housings a 1800mm.

294433 SCO Cable kit Spark 22

seatpost / shock / fork, 3mm / outer x3 1.8m / 1mm inner x4 1.5m plus end caps

The shock covers will be different for alloy and carbon front triangles.
The shock cover kit will include all the fixings and brackets.

292628 SCO Shock Cover Patron CB 22

282627 SCO Shock Cover Patron AL 22



The plug cover for the drive unit is also available:

292634 SCO eRIDE Plug cover/ bridge Patron 22



Shock/Suspension:

The shock bush kit has a custom size (17x10mm) for the Patron frame and not a standard aftersales spare part from your FOX agent.

294280 SCO eRIDE Shock mount bush Fox Patron 22

We will carry the rear shocks as spare parts. They are solely for sales in markets without a fox service distribution.

292640 SCO eRIDE Rear shock Patron Fox Nude

292641 SCO eRIDE Rear shock Patron Fox Nude KSH



There is a new twinloc system in MY22, with 4 different options in one kit.

(Please refer to the Twinloc chapter of the MY22 techbook for more information when available).

For bikes with no dropper seatpost the lower lever should be removed and the SP41 cable mount swapped.

290009 - SCO Twinloc downclamp 22



SPARK RC 900	Description	Part Number	Cam Colour
SCO Bike Patron eRIDE 900 Ultimate	Twinloc Int. Bottom	290009	Blue cam
SCO Bike Patron eRIDE 900 Tuned	Twinloc Int. Bottom	290009	Blue cam
SCO Bike Patron eRIDE 900	Twinloc Int. Bottom	290009	Blue cam
SCO Bike Patron eRIDE 910	Twinloc Int. Bottom	290009	Blue cam
SCO Bike Patron eRIDE 920	Twinloc Int. Bottom	290009	Green cam
SCO Bike Contessa Patron eRIDE 900	Twinloc Int. Bottom	290009	Blue cam
SCO Bike Contessa Patron eRIDE 910	Twinloc Int. Bottom	290009	Green cam

Linkage Overview:

The Patron MY22 has a simple Bearing system that can be easily maintained, there are however some points that should be noted.

There is a new Swingarm repair kit for the Patron:

291731 SCO eRIDE Swingarm Rep kit Patron 22

To help with bearing removal and refitting SCOTT offers the following tools:

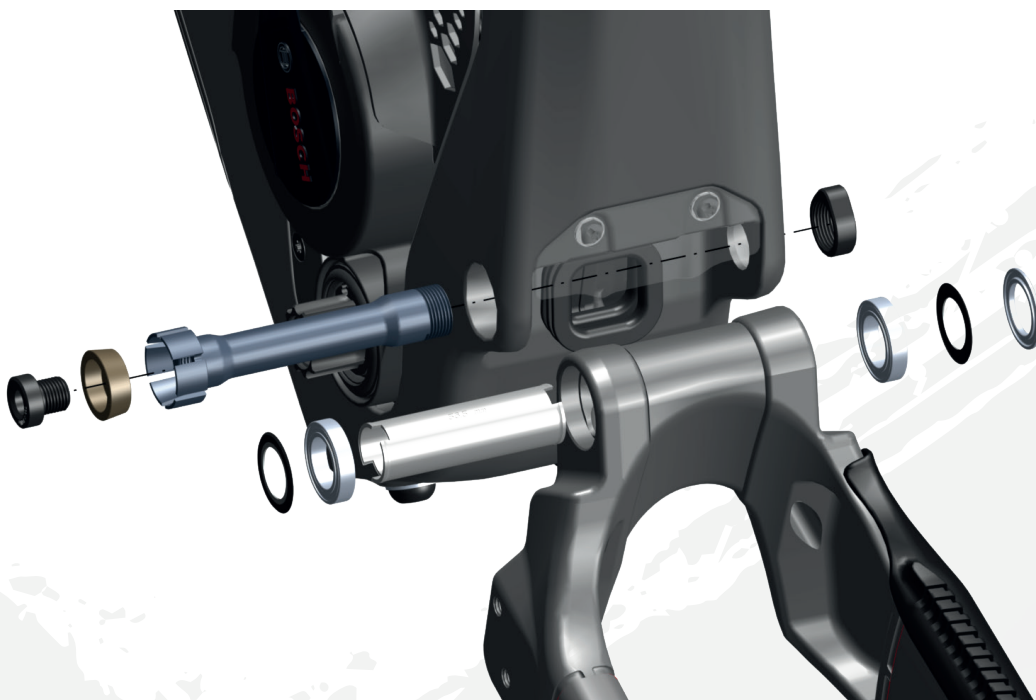
266321 - SCO Tool set swingarm Spark 17 /Gen 18

In addition, the following press tool is needed for the main linkage/seattube bearings only:

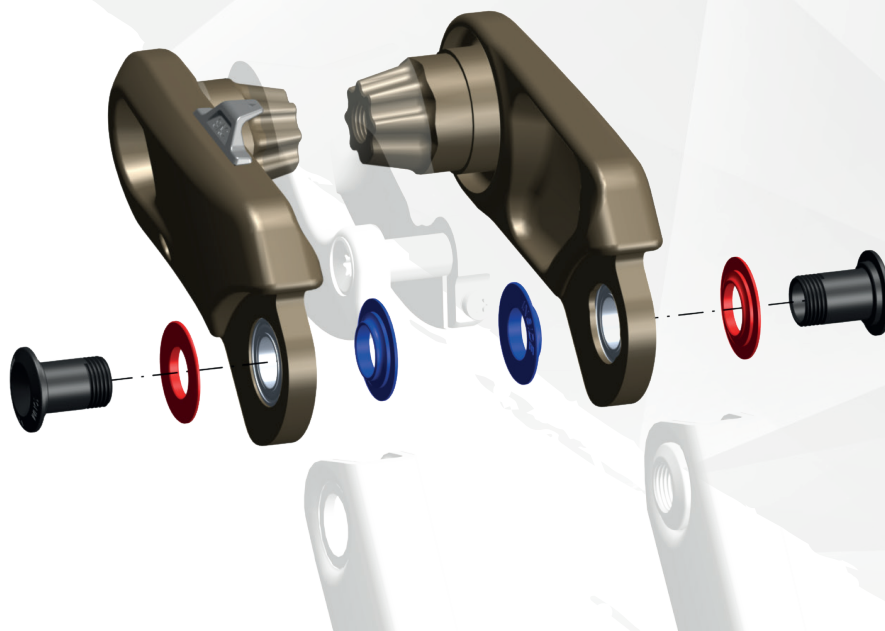
291227 - SCO Tool main link s-tube press Spark 22



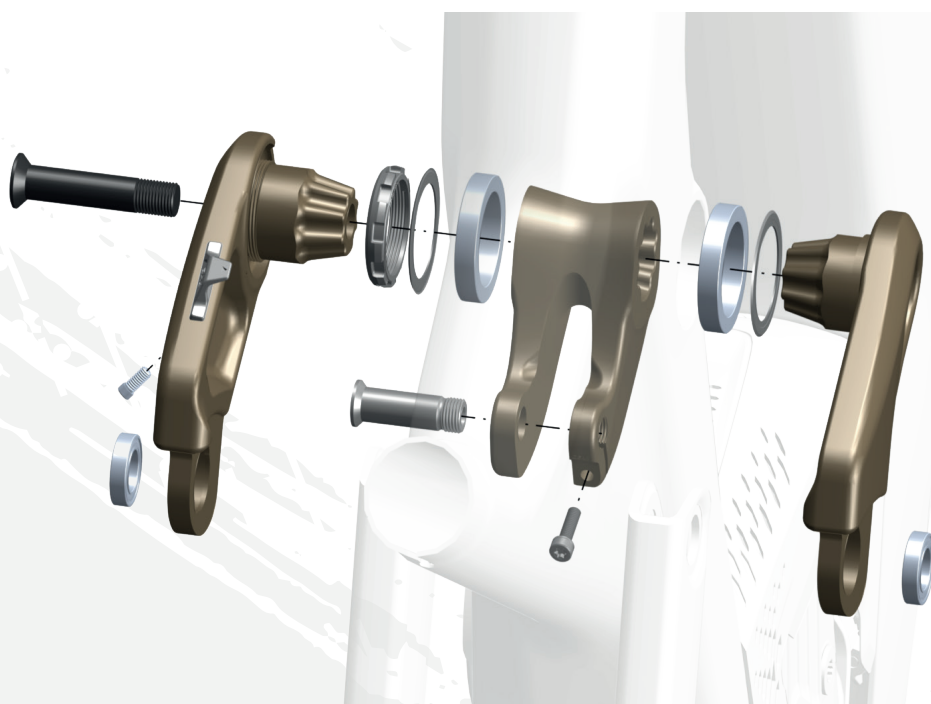
Main Pivot/Chainstay Overview



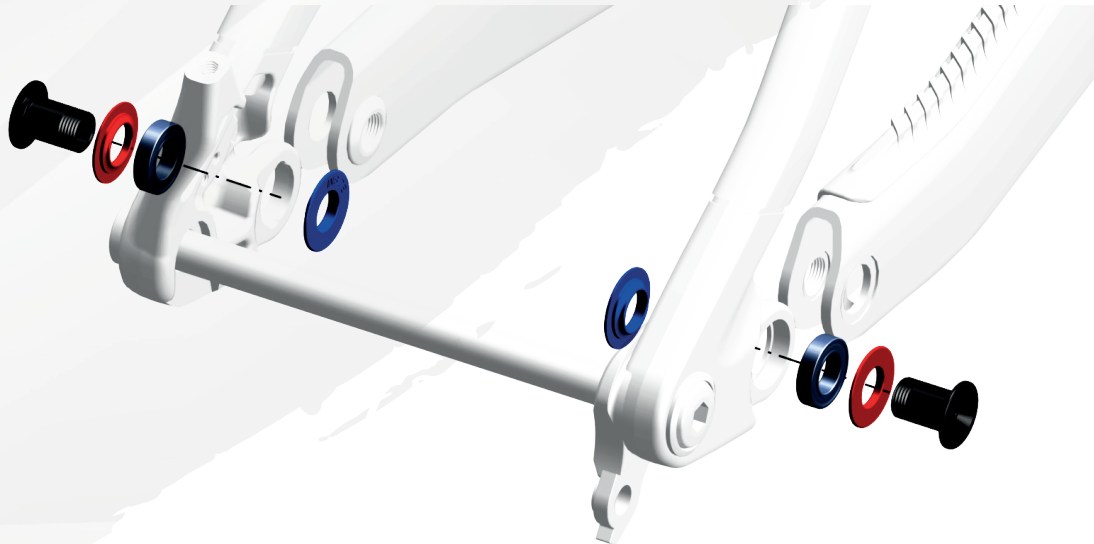
Linkage/Seatstay Overview



Main Linkage Overview

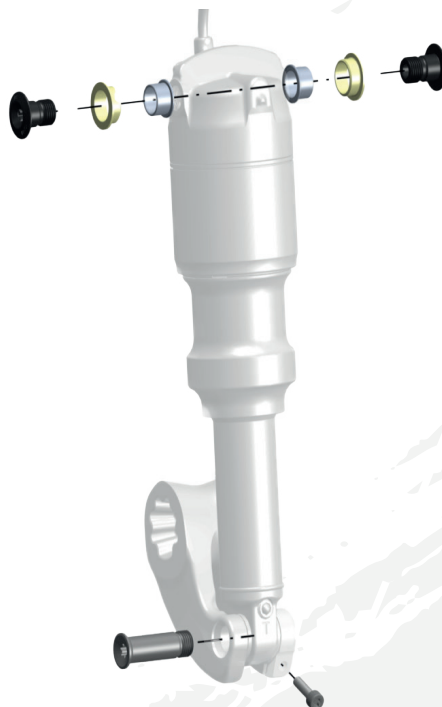


Chainstay/Seatstay Overview



Shock Installation Overview

294281 SCO eRIDE Shock mount bolt kit Patron 22



Linkages:

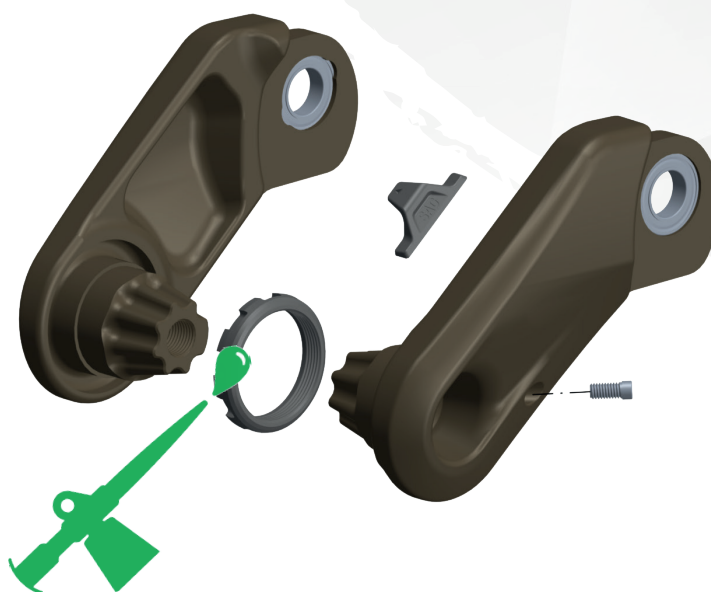
We have opened a separate part number for each coloured linkage.

Alloy only.

Each outer link comes with a preload ring, lock screw and seatstay bearings.

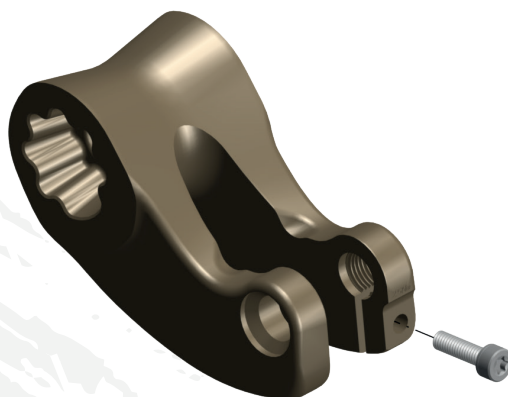
Ensure that the thread on the preload ring has been greased.

290043 SCO eRIDE Linkage outer Patron 22



The inner Link is sold separately:

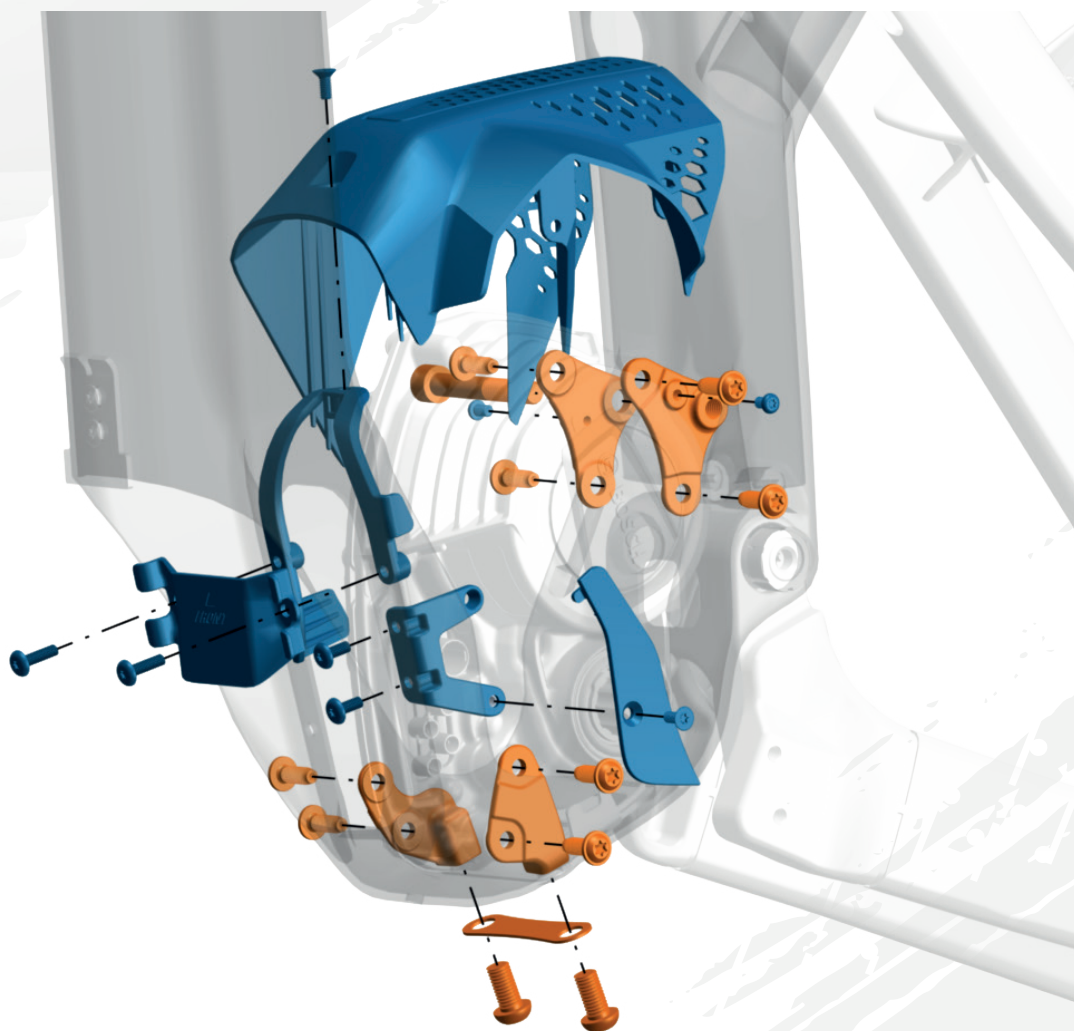
291727 SCO eRIDE Linkage inner Patron 22



Drive Unit & Battery Assembly:

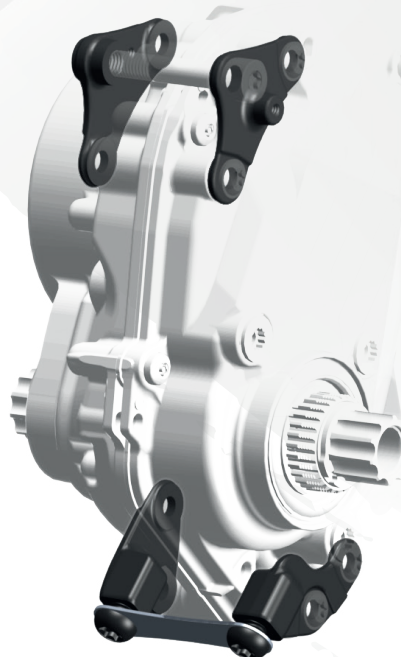
Patron features the new BS3 system from Bosch, with a 750Wh battery.

Drive Unit Assembly



292626 SCO eRIDE Motor mounts Patron 22

The kit includes the T25 M5 and M8 bolts



The motor cover kit contains the cover, fixings and screws. The motor cover is the same for both alloy and Carbon Front triangles.

291730 SCO eRIDE Motor Cover Patron 22

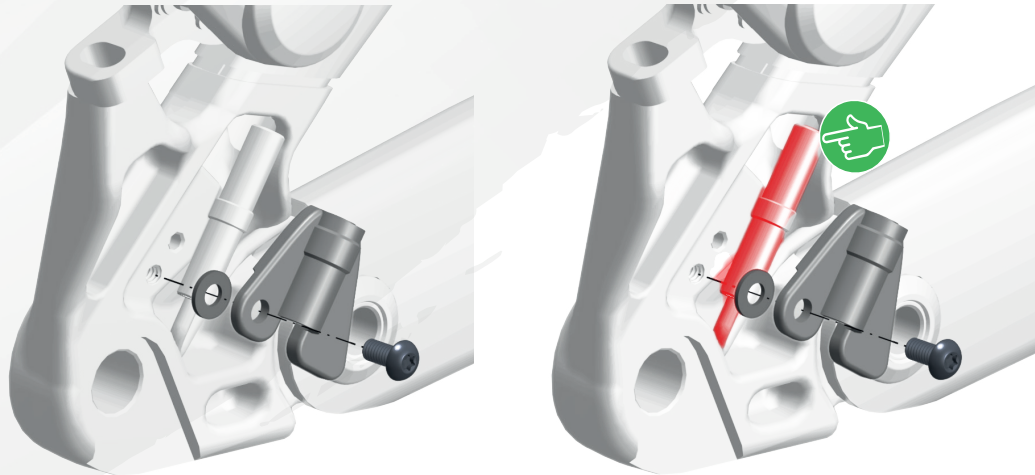


Speed sensor including cable is provided by Bosch.
The speed sensor holder is available from SCOTT.

Patron 910 MY22 the Speed Sensor in red has to be turned 180° to face downwards.



292632 SCO eRIDE S-sensor clip Patron 22



Battery Assembly

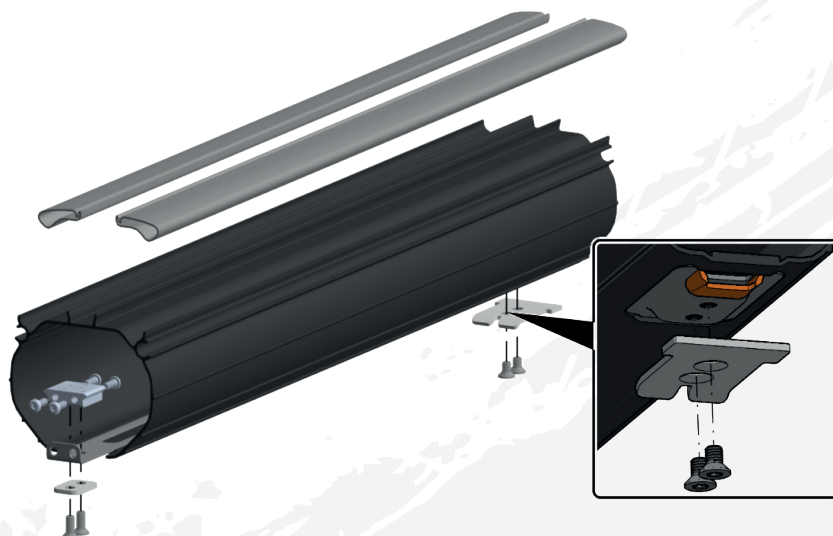
The battery is inserted into a plastic battery tube, which in turn is screwed into the frame.

The battery can only be secured into the frame with a quick release clip. The battery cannot be locked into the frame with the keys, as no lock cylinder is included into the construction.

The battery tube can be unscrewed and taken out of the frame. This enables you to change the Bosch connection port that is screwed onto the battery tube.

The kit includes screws and fixation plates, but no Bosch parts.

292624 SCO eRIDE battery tube Patron 22



We have two different battery covers, one kit for alloy, and one for carbon front triangles.

The kit contains fixations and screws.

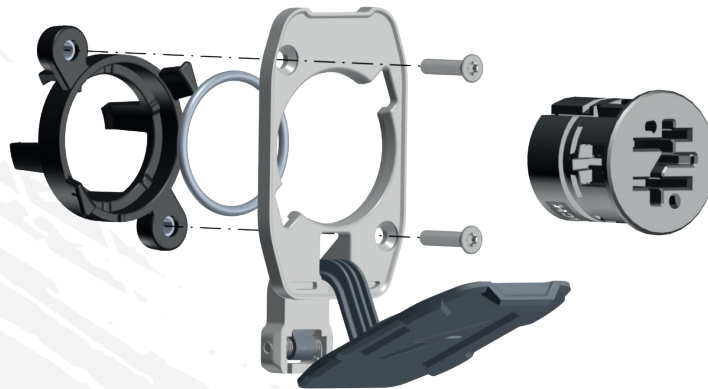
291729 SCO eRIDE Bat Cover Patron CB 22

291728 SCO eRIDE Bat Cover Patron AL 22

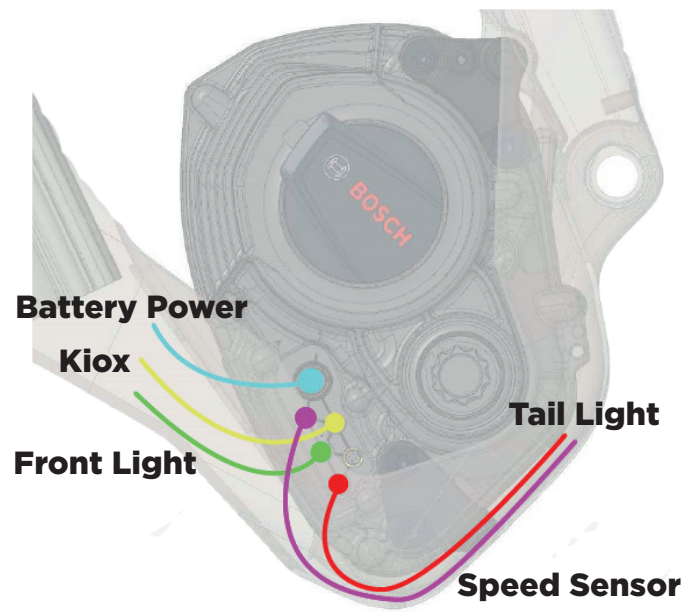
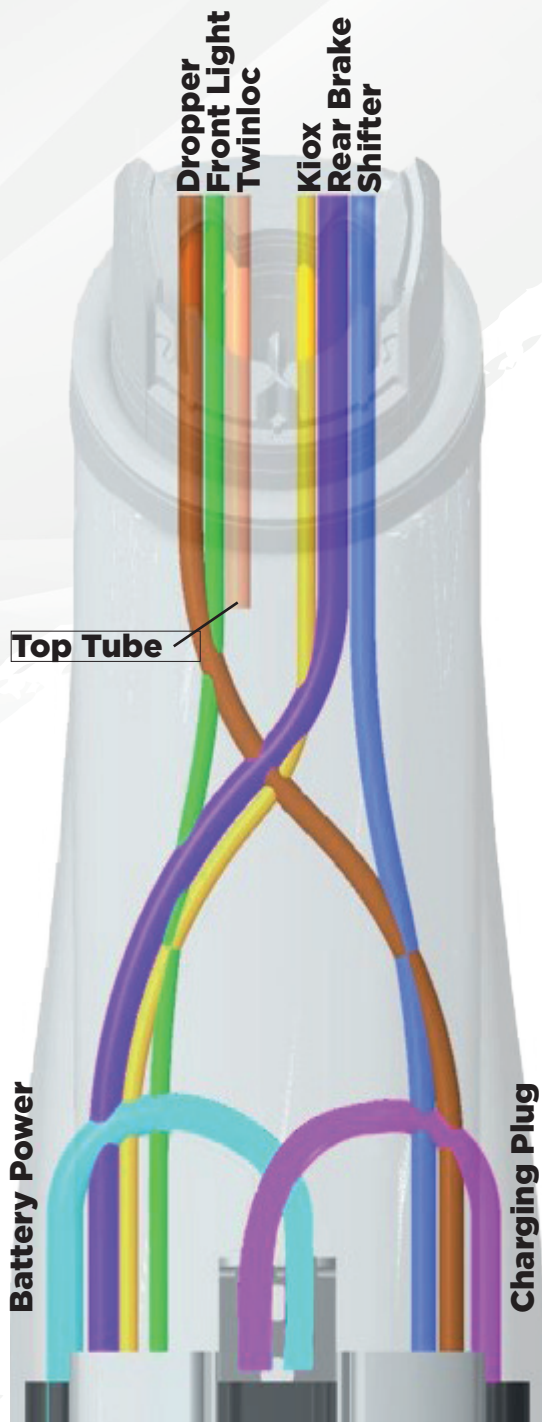


Charging Port Assembly:

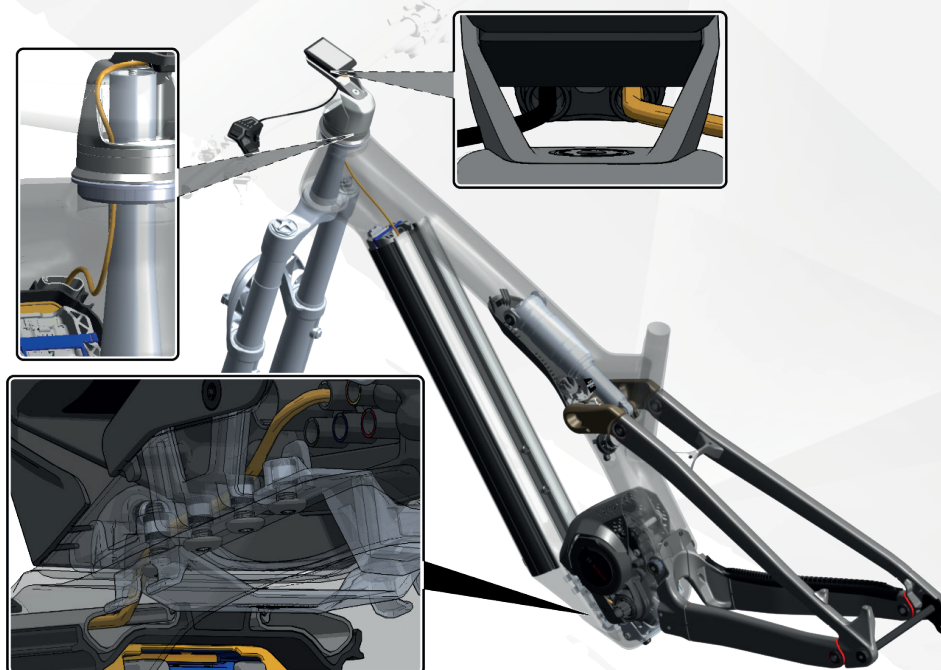
292625 SCO eRIDE Charging door Patron 22



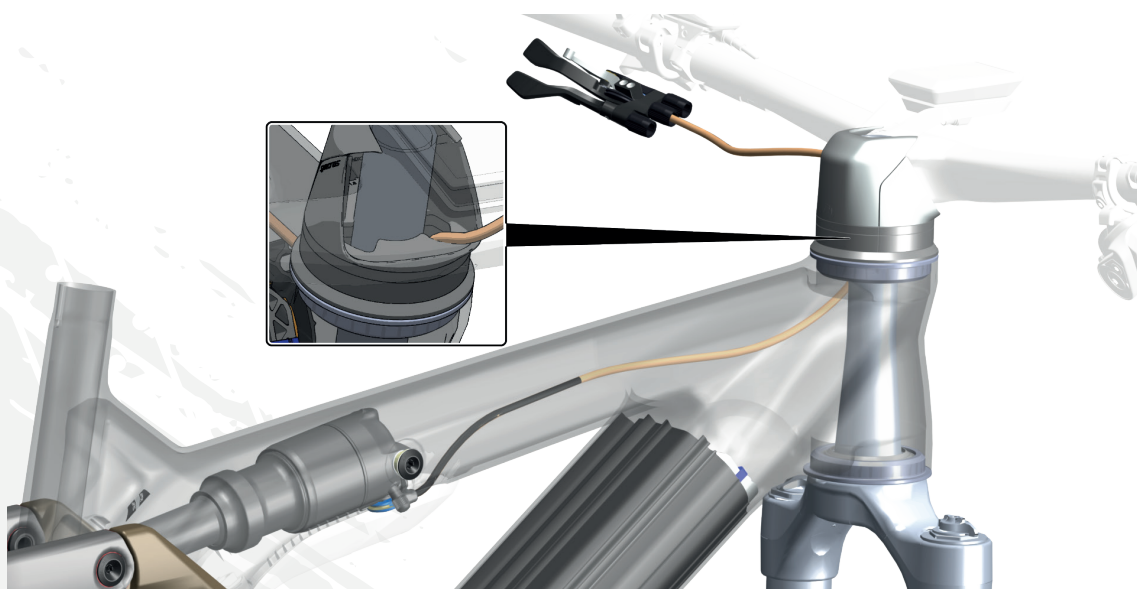
Cable Routing:



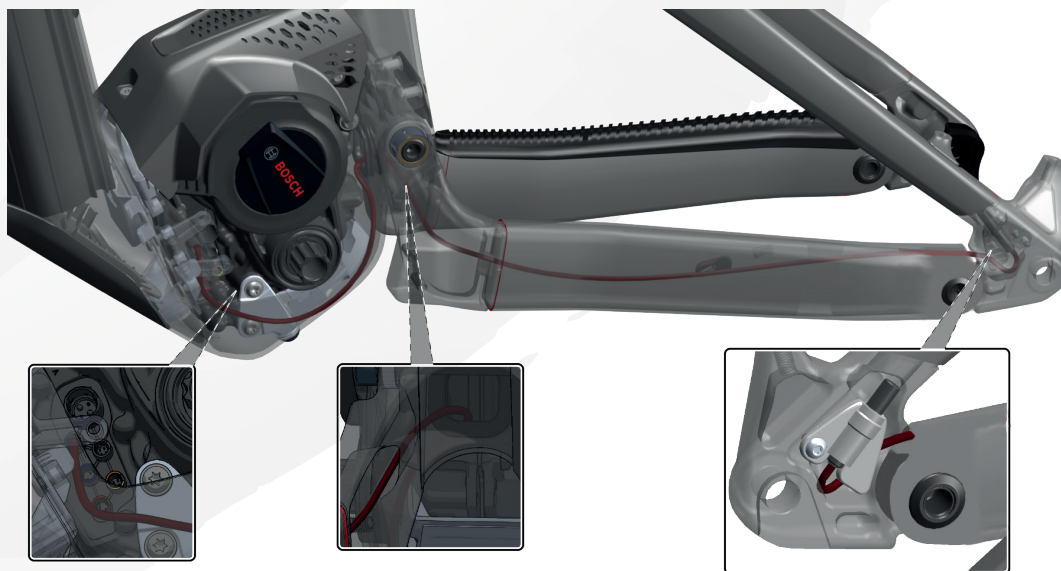
KOIX DISPLAY CABLE ROUTING



TWINLOC ROUTING



PAS SENSOR ROUTING



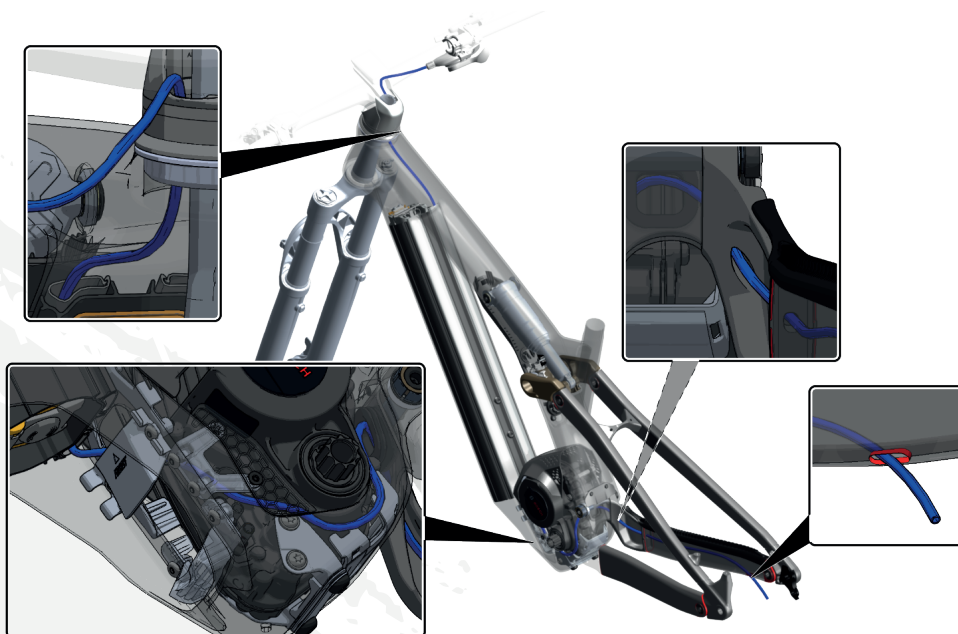
BATTERY POWER CABLE ROUTING



DROPPER POST CABLE ROUTING



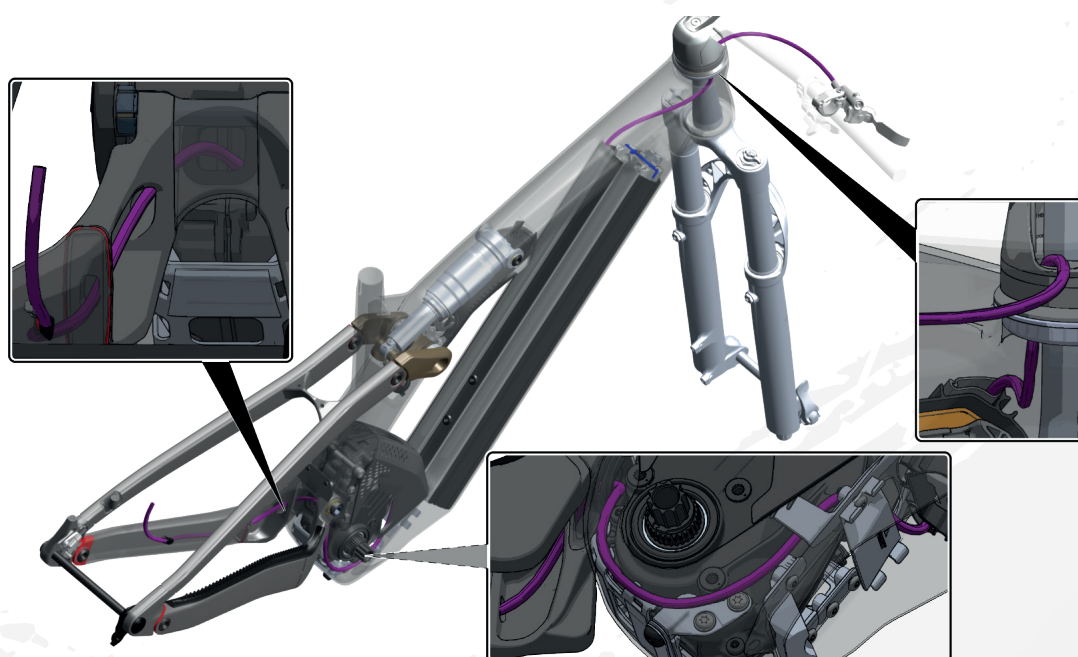
REAR DERALLIEUR CABLE ROUTING



CHARGING PLUG CABLE ROUTING



REAR BRAKE CABLE ROUTING



Rear Light:

The Patron will have a rear light mounted on the seatstays.

The aftermarket light from Syncros will not include the connection cable. This must be purchased from Bosch separately.

(Light Cable for Rear Light 1400mm BCH3330_1400)

288342 SYN eRIDE integrated light fender



Rear and Front lights cables will be pre-installed on all bikes (with and without rear light) ex factory. Light settings will as well be enabled.

Water Bottle Capacity:

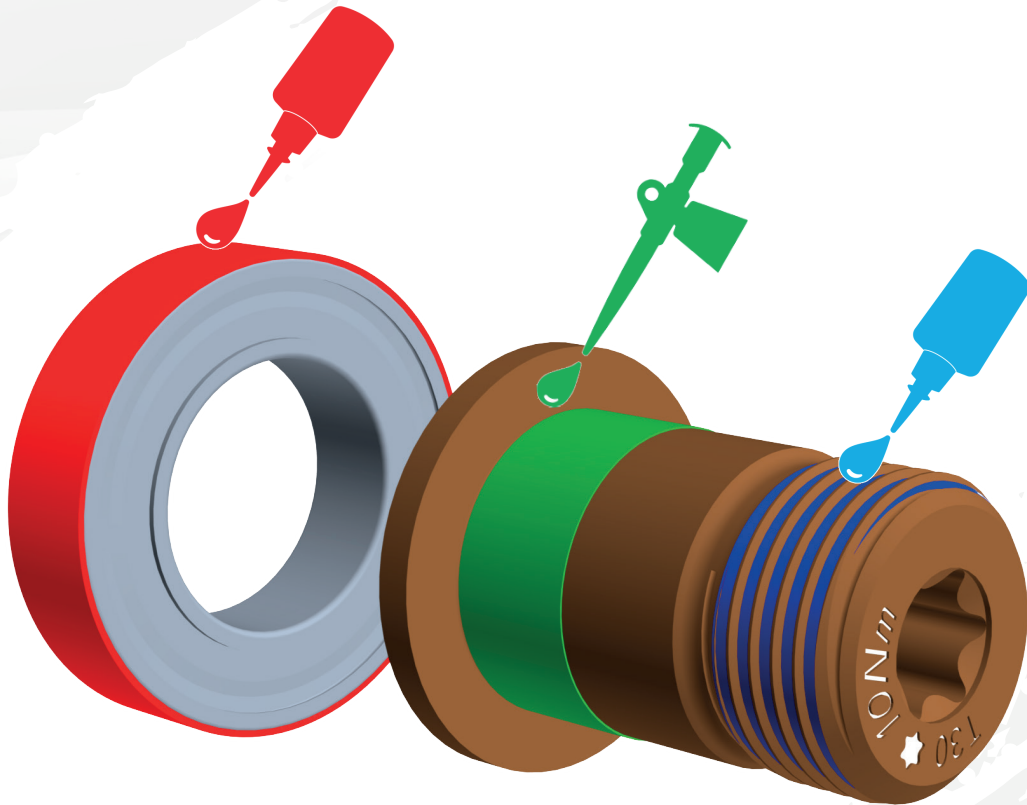
Patron frame is designed to be used with one cage and a 800 ml bottle.

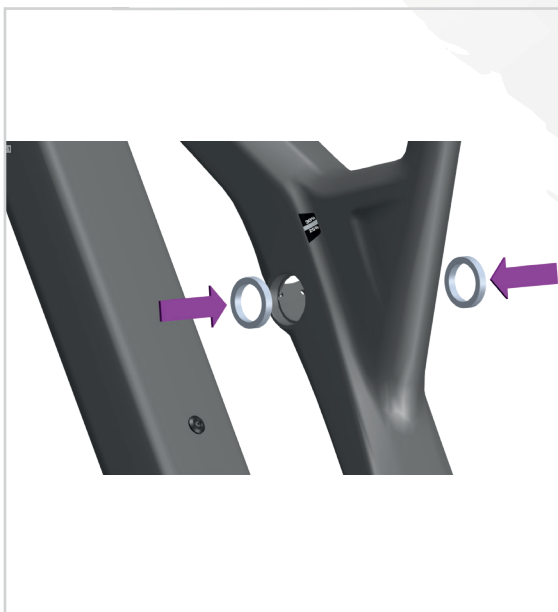


ASSEMBLY:

For the following instructions please follow the tool type and torque settings indicated on each bolt.

Use Bearing Fit, Grease, and Threadloc as shown (all carbon friendly):





01

Push the bearings into the main frame, right and left.



02

Push the right side bearing into the chainstay.





03

Install the spacer Tube.



04

Press in the left bearing into the chainstay.





05

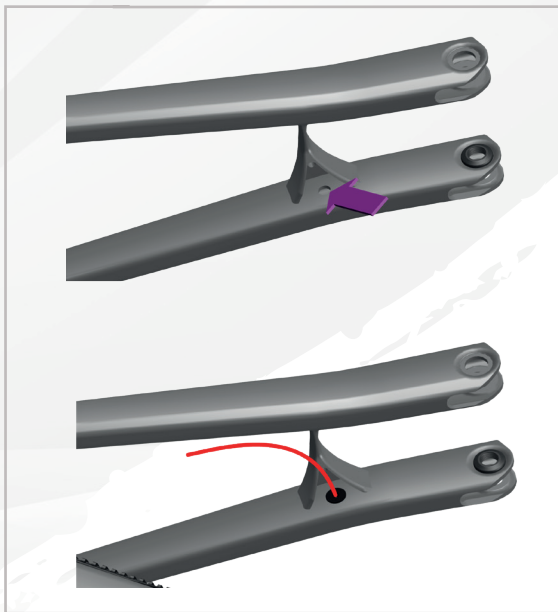
Press in the left and right side seatstay bearings.



06

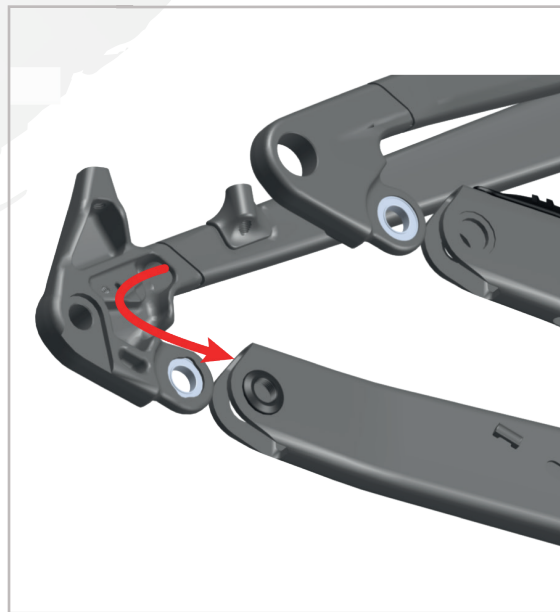
Press the bearings into the linkage bars.





07

If used with the Syncros fender light, pull the light cable (red) through the seatstay. From front to rear. Remembering to add the seal.



08

Pull the cable out of the rear of the seatstay and back into chainstay.

Be careful not to pinch or damage the cable!





09

Mount the Syncros Light fender with the two screws.



10

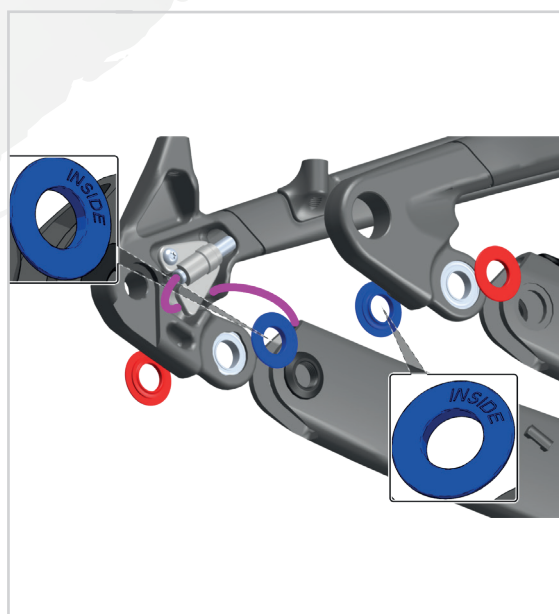
Guide the light cable (red) through the chainstay. Then pass the brake hose (purple) through and out of the chainstay. Brake hose routing direction depends on brake type. *Check cable routing diagram on previous pages*





11

Secure the Speed Sensor to the mount, then attach to the seatstay.



12

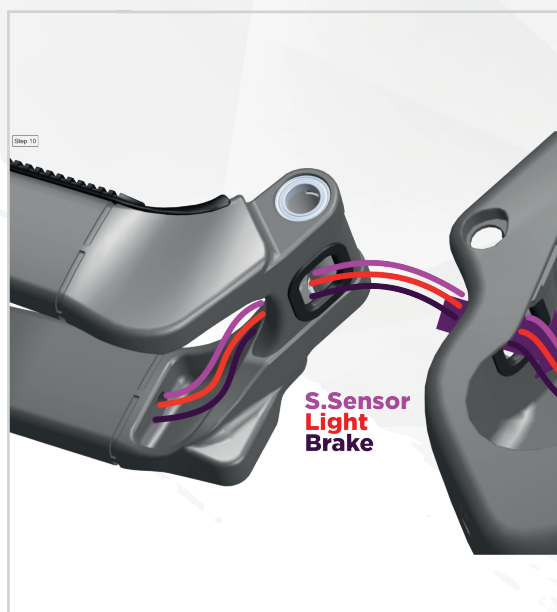
Insert the red and blue spacers. Make sure the spacers are aligned in the correct position as indicated.





13

Connect the seatstay & chainstay.



14

Guide the Brake, Speed Sensor, and Light cables through the chainstay and into the front triangle.





15

Place the dark washers onto the bearings.



16

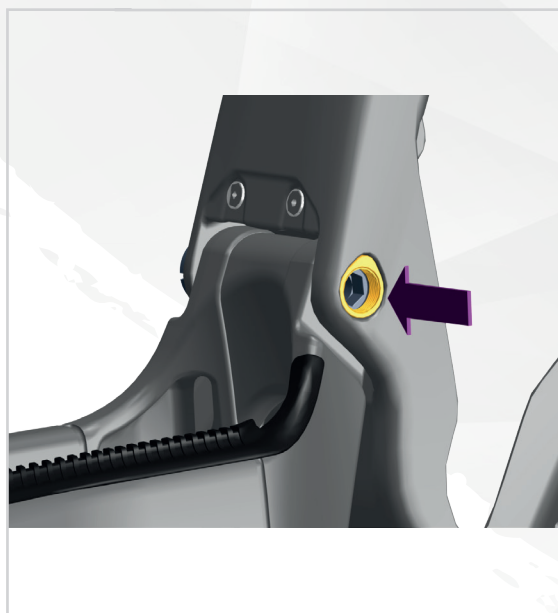
Install the drive side spacer as indicated.





17

Assemble the chainstay and insert the pivot axle.



18

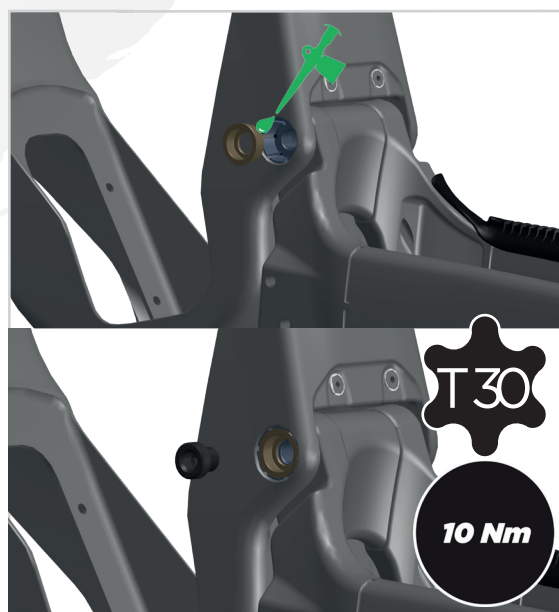
Insert the pivot nut.





19

Tighten Axle Bolt.



20

Insert expansion washer. Then the end bolt, and tighten.





21

Mount rear brake, torque to manufacturers recommendation.



22

Insert the Igus bushings for the shock in the front triangle.

NO GREASE





23

Loosen the grub screw on the linkage.



24

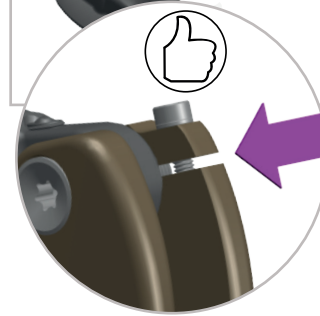
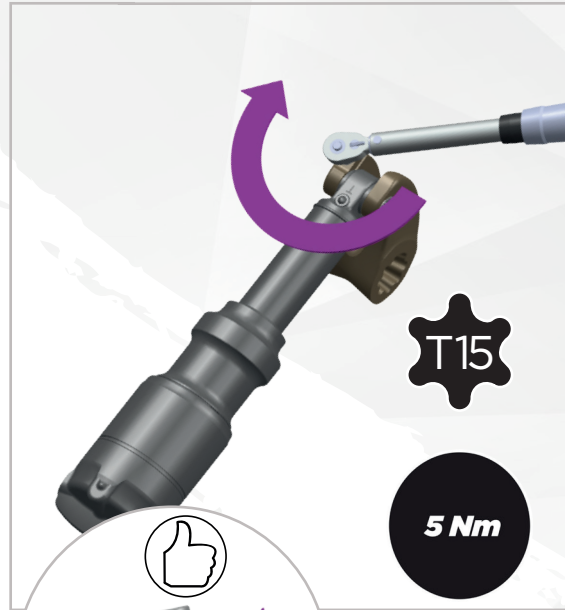
Connect the linkage to the shock.

Make sure the linkage is correctly positioned!

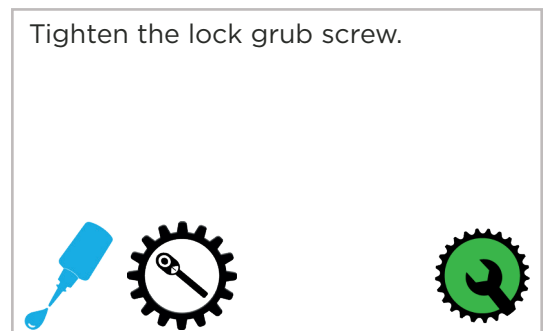
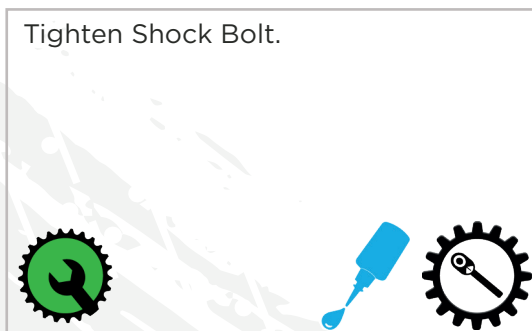


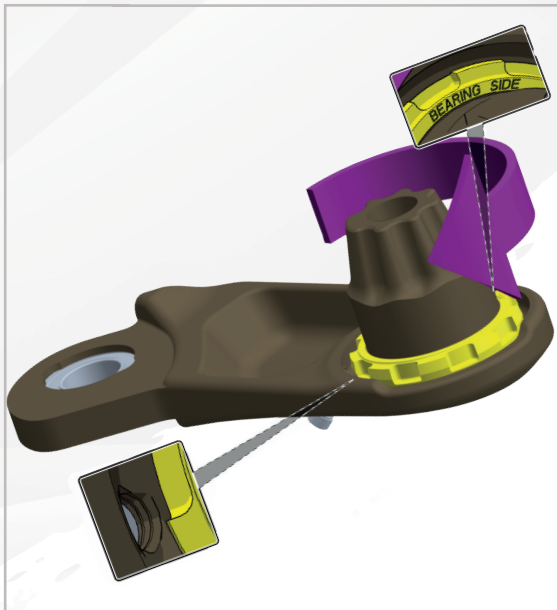


25



26

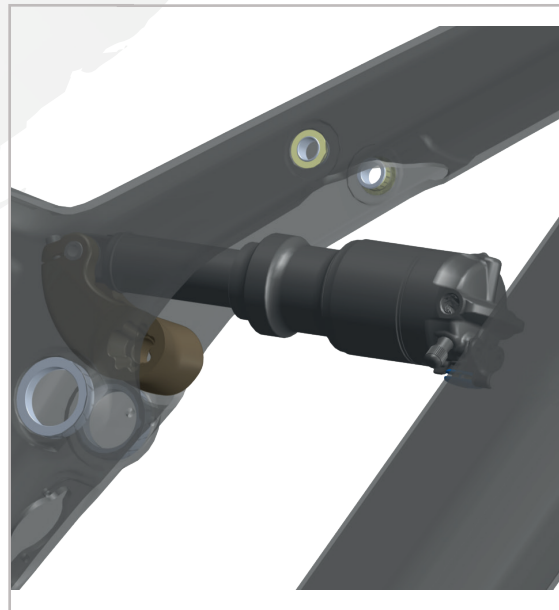




27

Set the preload ring.

Take note of the indications for the orientation and positioning of the preload ring on the linkage.



28

Insert the inner linkage and shock into the frame.

Make sure the linkage is correctly positioned!

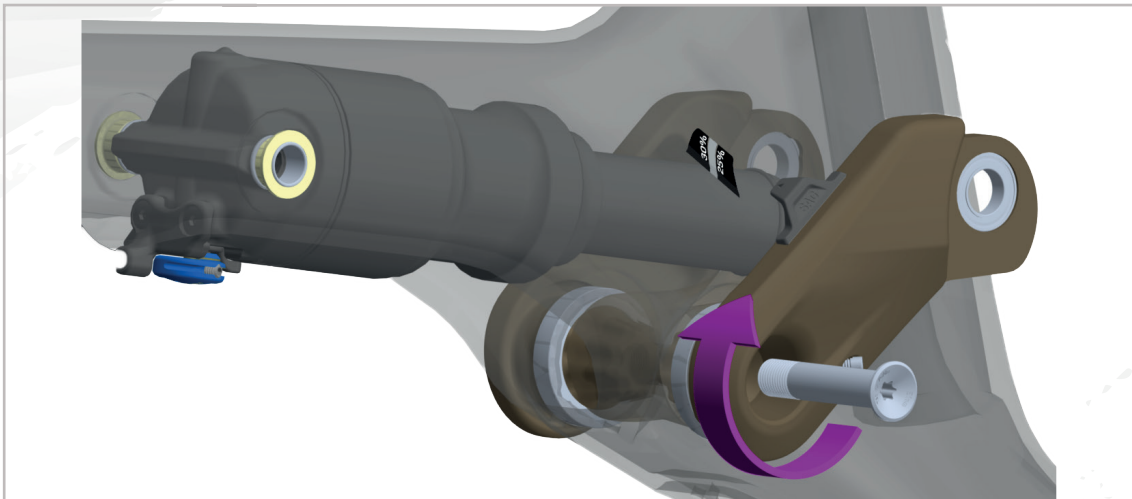
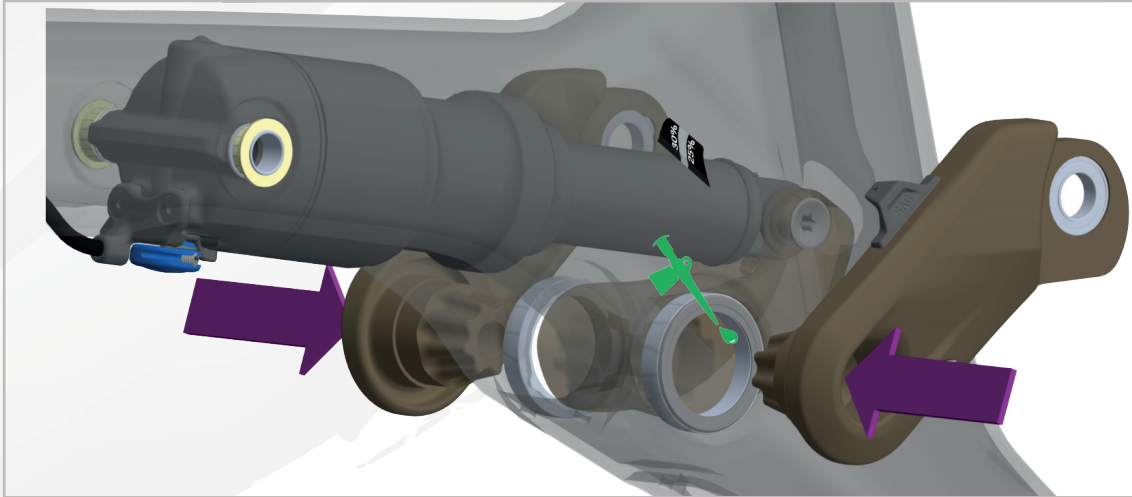




29

Place the washer on the bearing, making sure the lighter golden side is outer most.

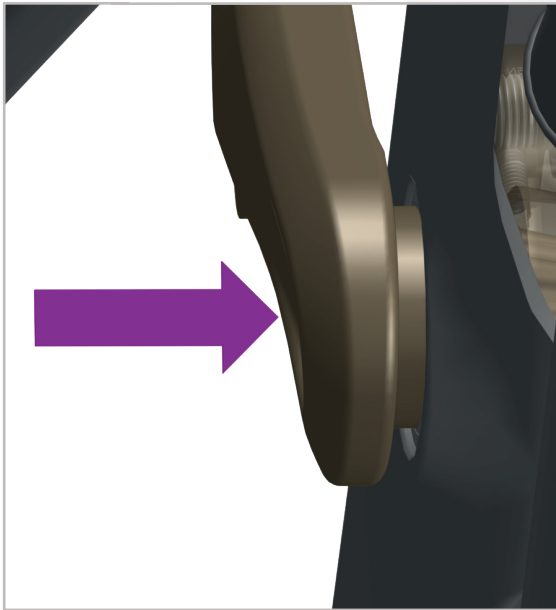




30

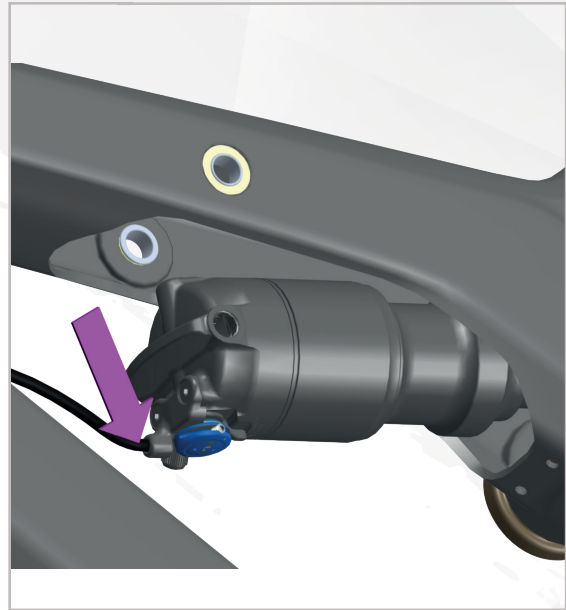
Assemble the right and left outer linkages to the inner linkage. Hand tighten the linkage bolt outer. Don't set final torque.





31

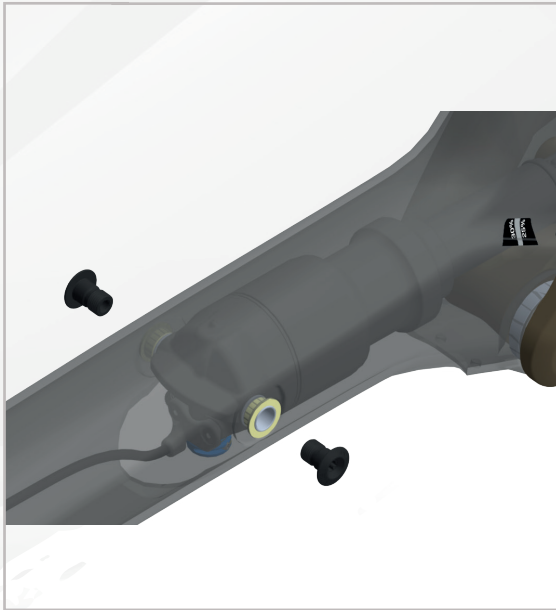
Hand push drive-side linkage bar in position. There should be NO GAP between linkage bar and main frame bearing seal.



32

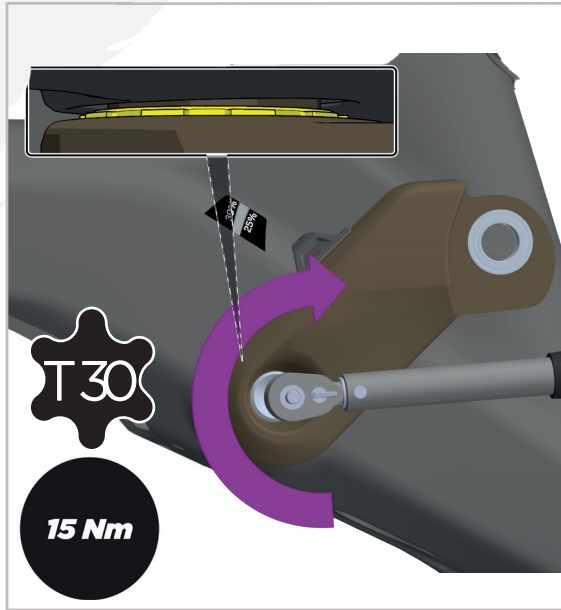
Lower the shock and attach the twinloc cable.





33

Place the shock into the correct position. Lightly tighten the trunnion bolts. Do not set the final torque.

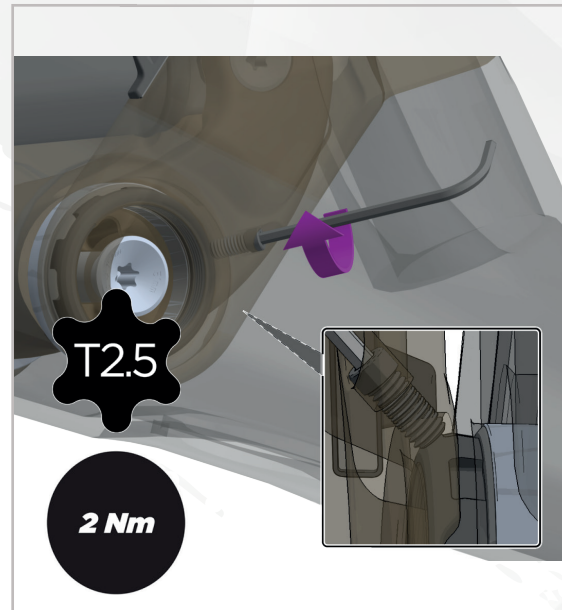
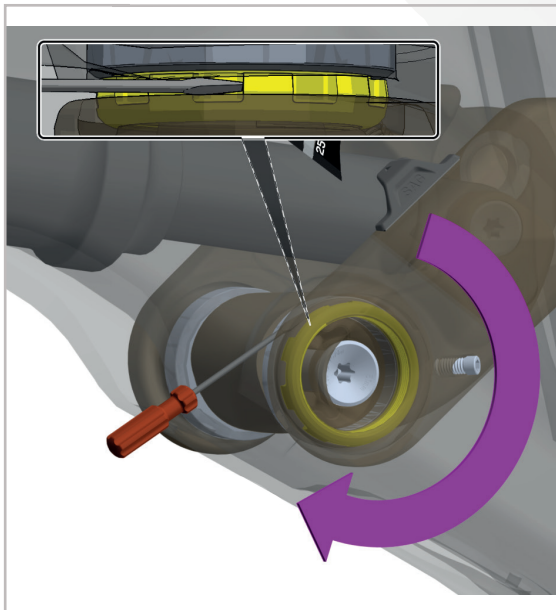


34

Set the torque on the linkage bar on the non drive side. This should be done after the front shock bolts are fitted to prevent the linkage pushing against the inside of the frame.

A small gap between the non drive-side linkage bar preload ring and main frame bearing seal is needed.

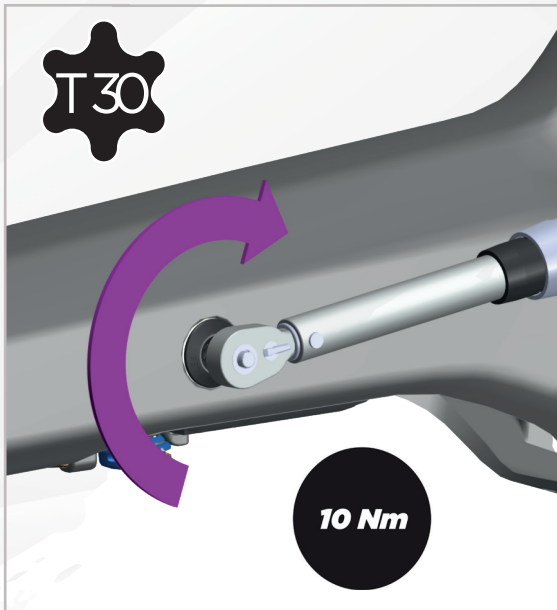




35

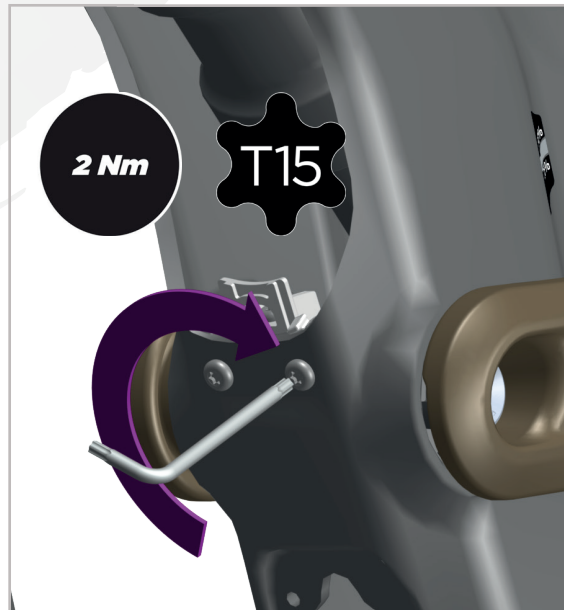
Set the preload ring on the non-drive side to close the gap to main frame bearing seal, then screw in linkage grub screw.





36

Tighten trunnion shock bolts.



37

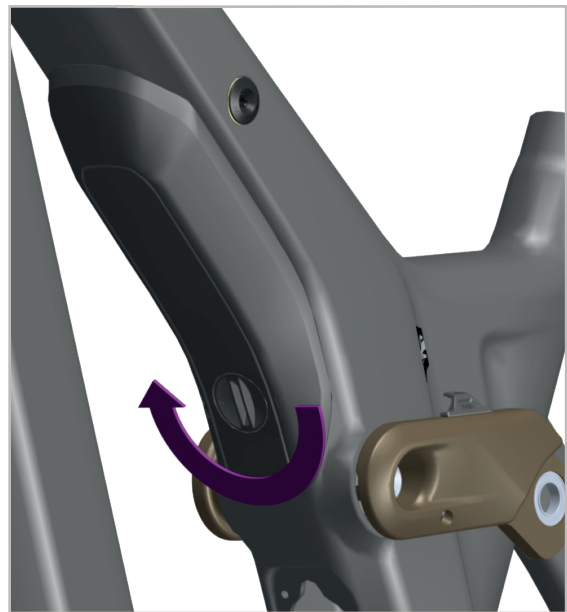
Install the shock cover bracket.

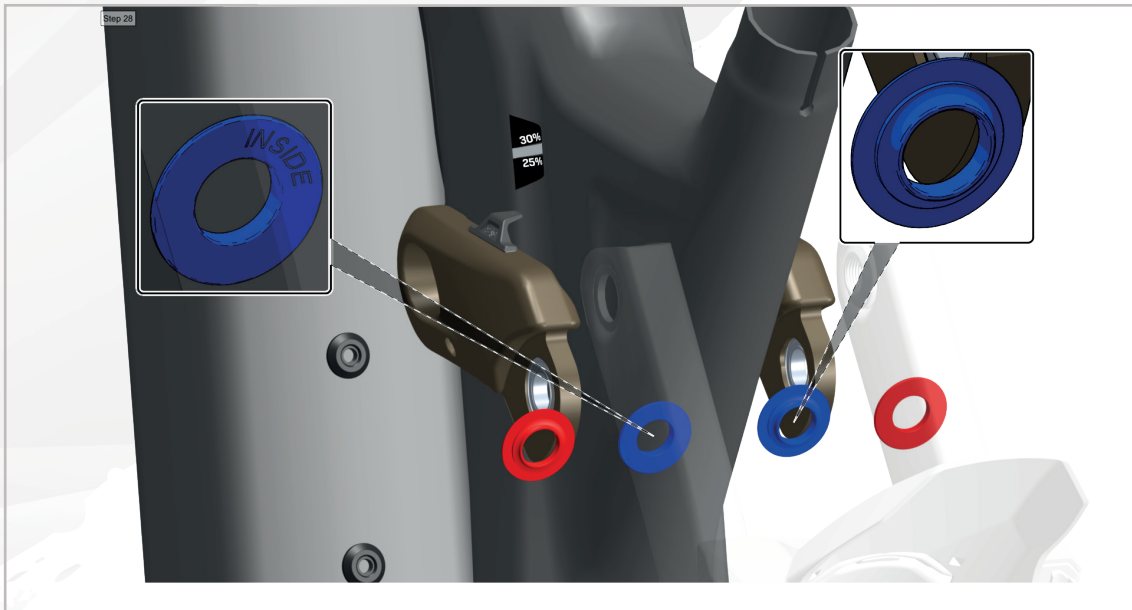




38

Install the shock cover, nose first, twist lock at the rear.

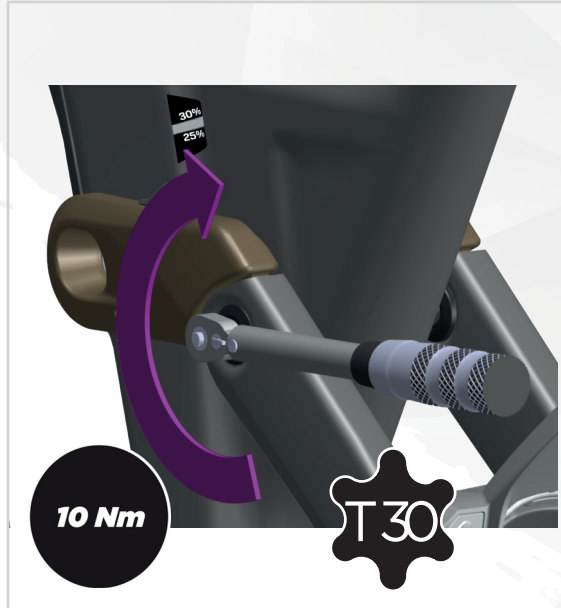




39

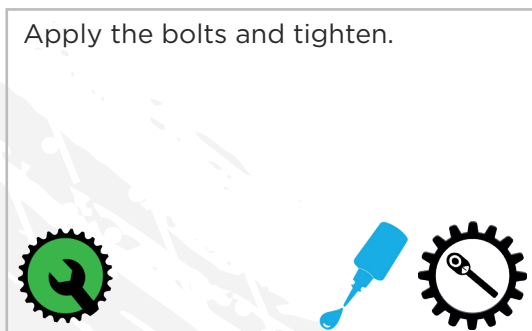
Install the red & blue washers (pay attention to the orientation of the washer as indicated). Connect the seatstays to the linkages.



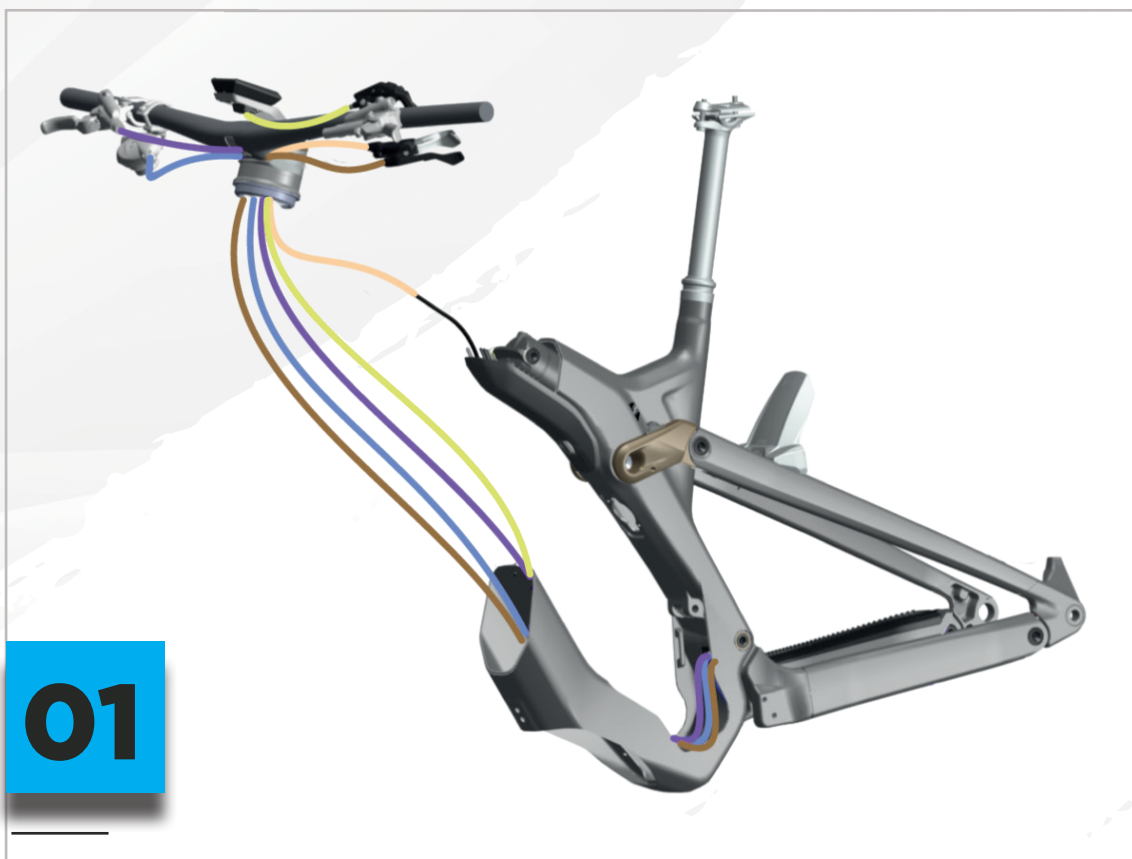


40

Apply the bolts and tighten.



Battery Assembly:

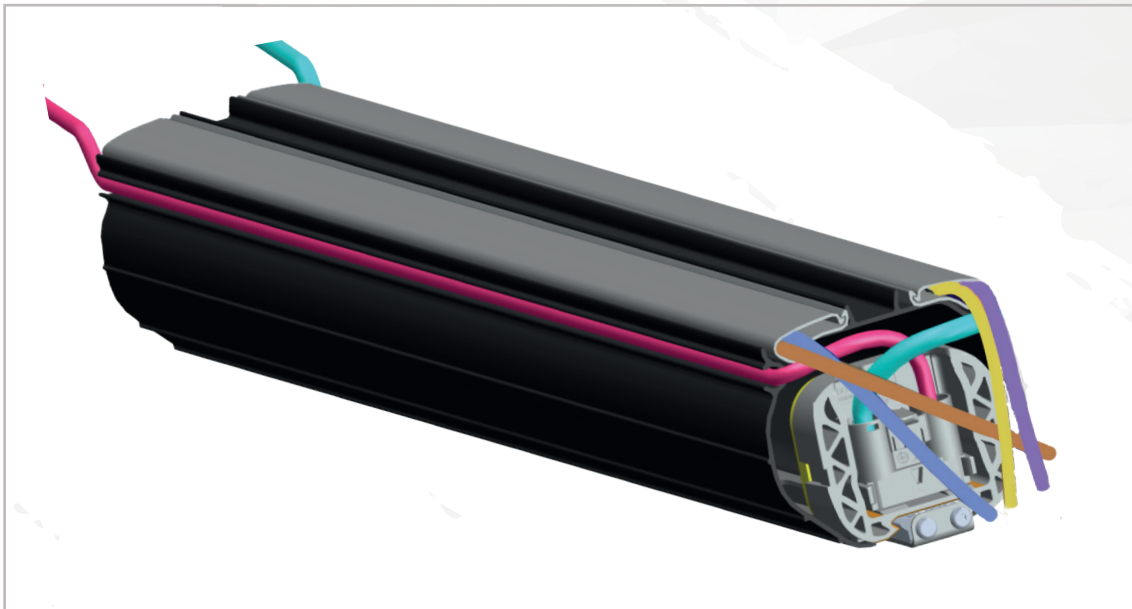
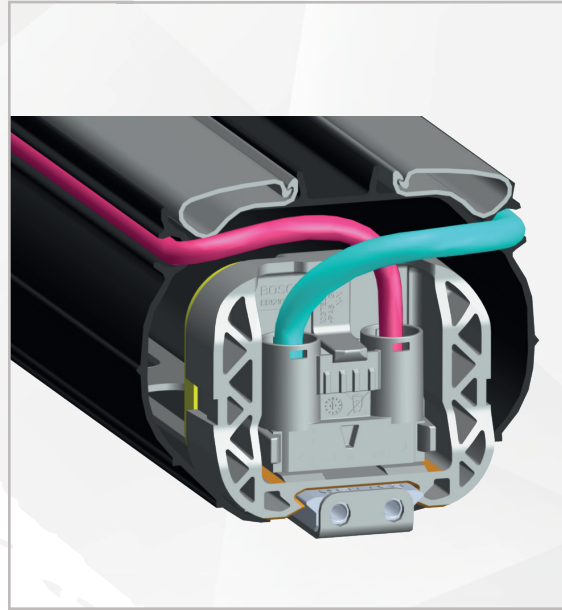
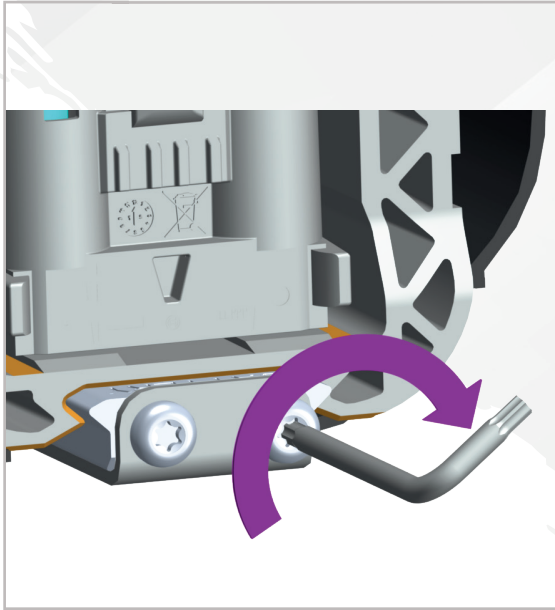


01

Route Rear Derailleur, Rear Brake, Dropper Post, Battery power cable (battery to motor), and the Kiox display cables through headset.



Please also check the routing on previous cable routing pages



02

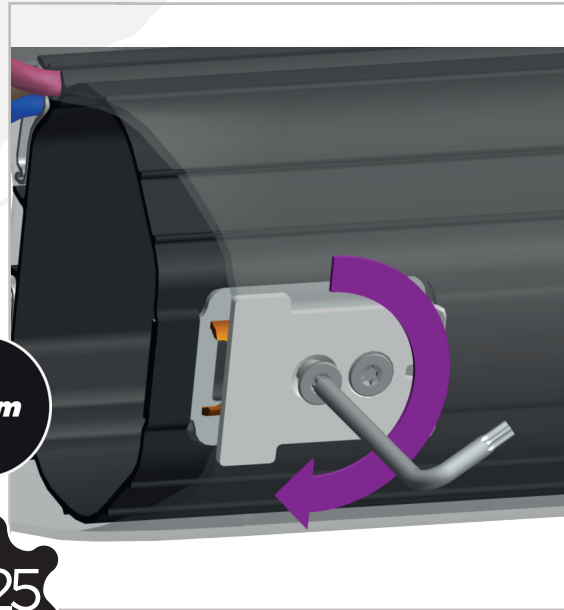
Connect the battery head connection to the battery tube. Place all the cables into the grey channels of the battery tube. Apart from the charging plug cable (purple) & battery power cable (blue).





5 Nm

T25



03

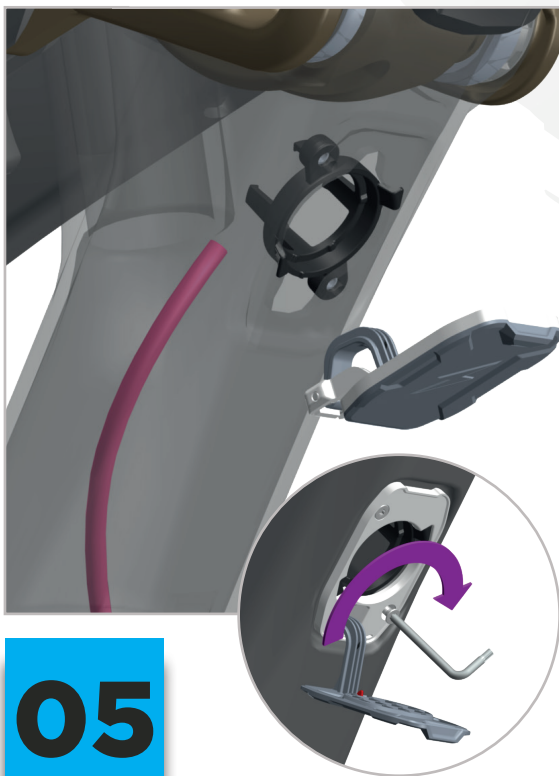
04

Secure the battery tube front bolt.



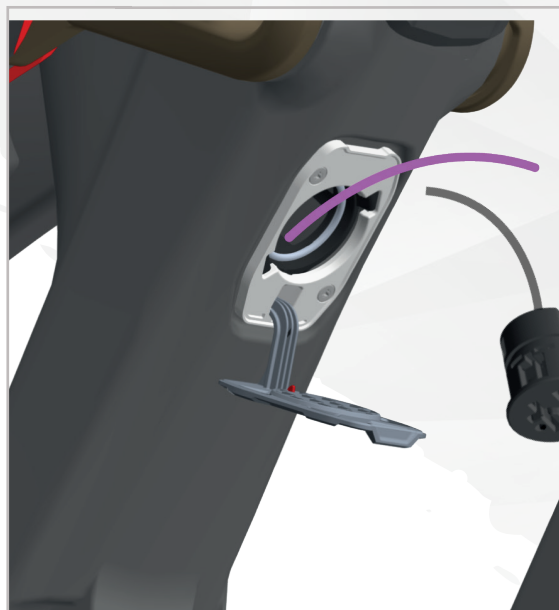
Attach the battery tube lower bolts and battery lock bracket.

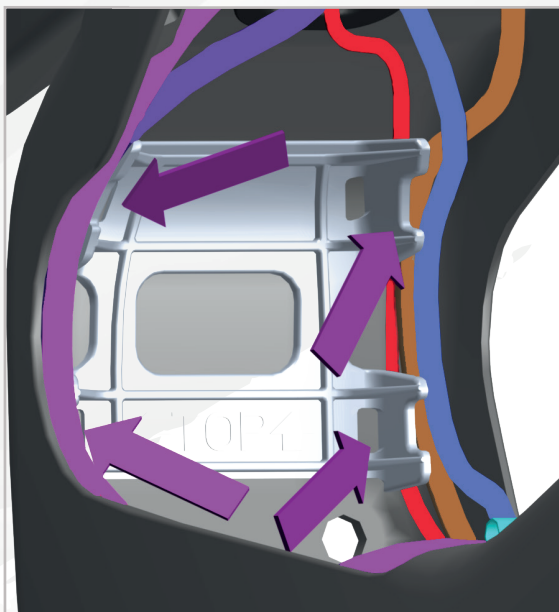




05

Install the charger plug housing, both parts. Thread the the cable through the housing and connect to the charger plug head cable. Press the charger plug head into the housing.





06

Secure the cables with zip ties to the cable guide plate above the motor bracket in the seat tube.

NOT DROPPER!



07

Attach the plug cover bracket.





08

Fix the battery cover mount into place.



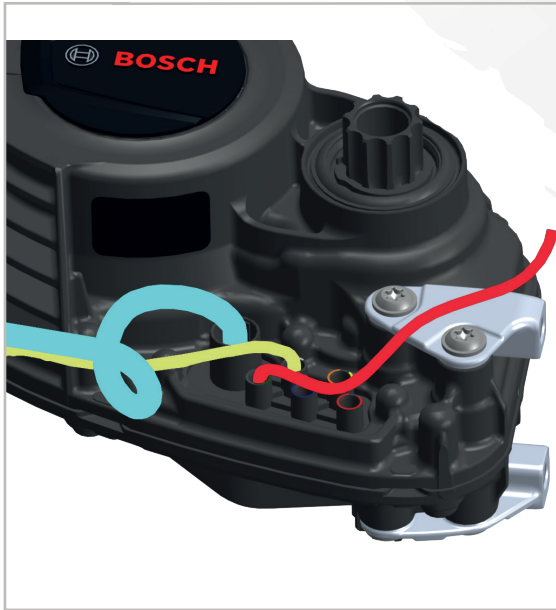
Motor Assembly:



01

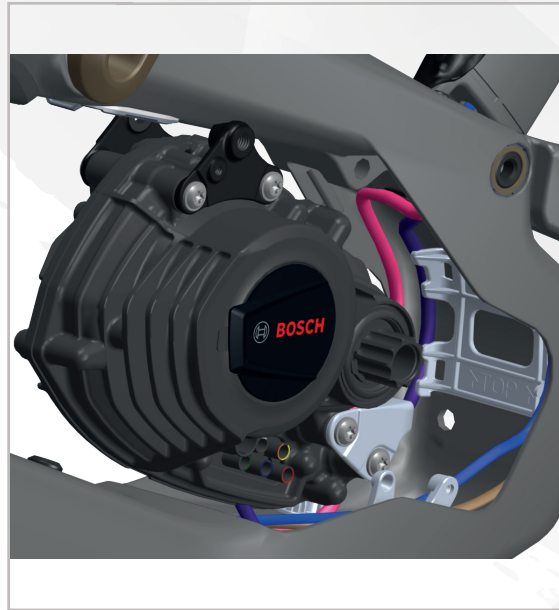
Assemble the motor bracket bolts.





02

Connect the display cable, light cable, and drive cable to the drive unit.



03

Install the motor into the frame.





04

Insert the motor attachment bolt.
Do not tighten.



05

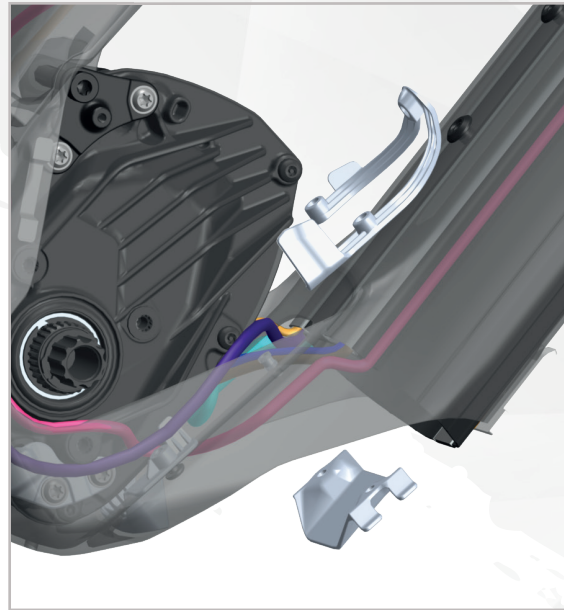
Place and tighten the bottom motor bolts.





06

Tighten top motor bolt.



07

Install the upper motor cover bracket.





08

Install the lower motor cover bracket.



09

Place motor cover over the motor.





10

Fix in place both sides, left & right.



11

Attach the plug cover.

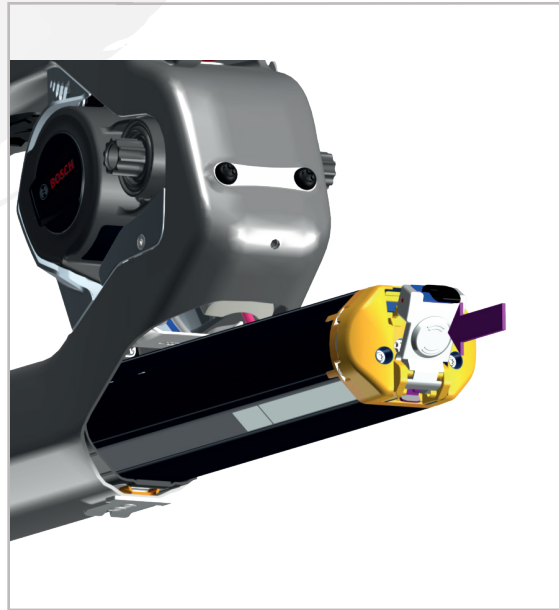


Battery Installation & Removal:



01

Open the battery cover.

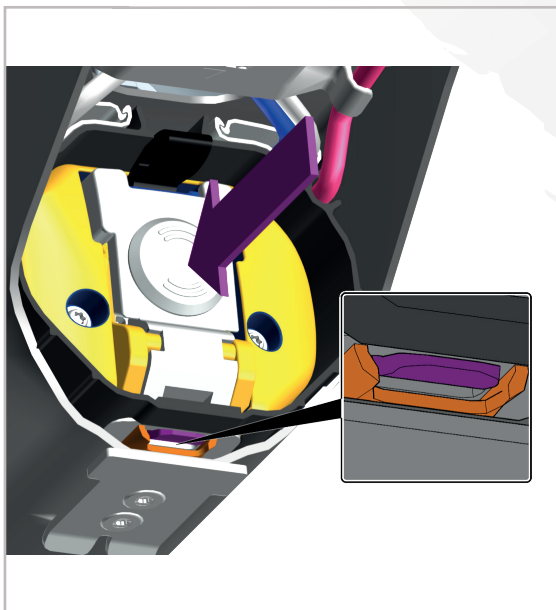


02

Slide the battery into the battery tube.

Make sure the battery is the correct way around!





03

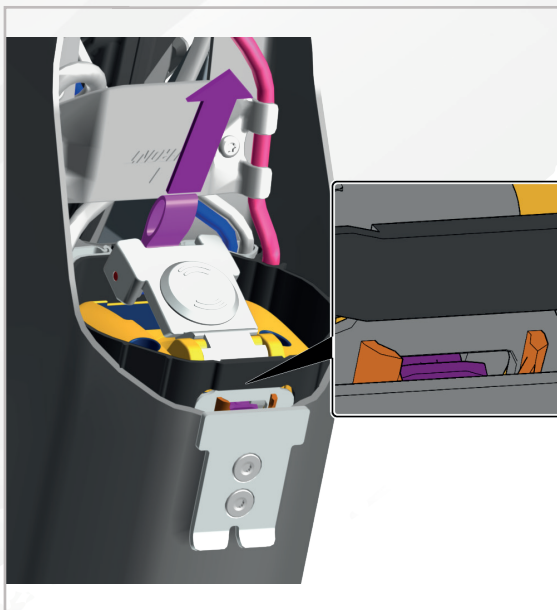
Close the battery door and make sure the catch is engaged correctly.



04

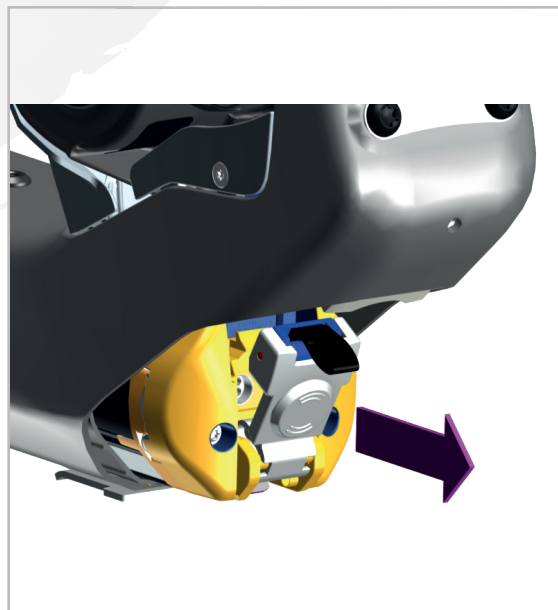
Re-install the battery cover and tighten.





05

To remove the battery, unlock the cover. Release the battery door, making sure the catch has disengaged.



06

Slide the battery out of the battery tube.



Shock Removal:



01

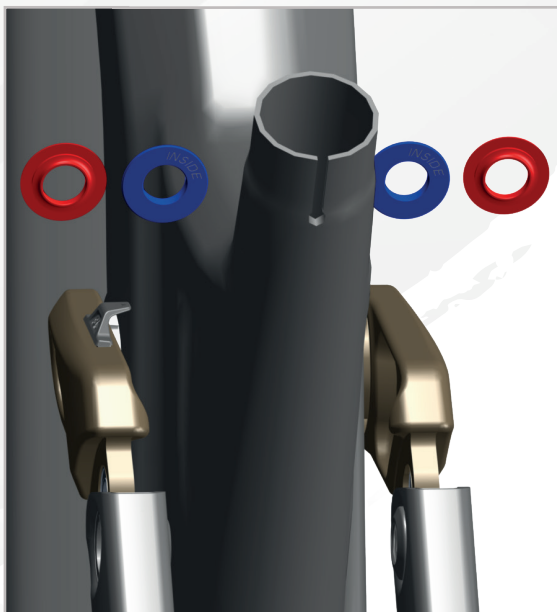
Remove the shock cover.



02

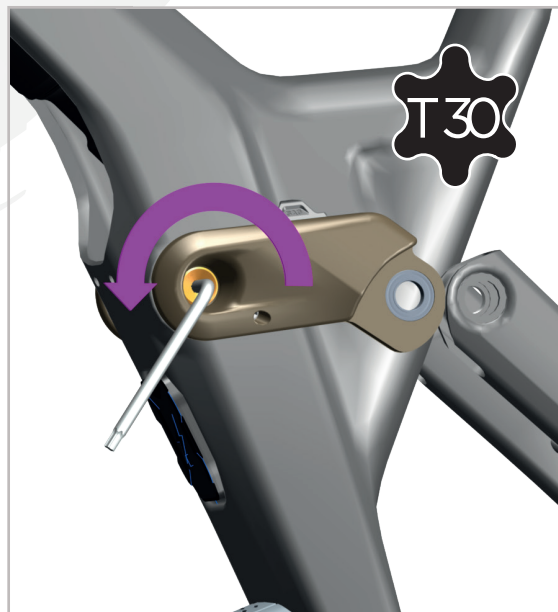
Unscrew both linkage/seatstay bolts, left & right sides.





03

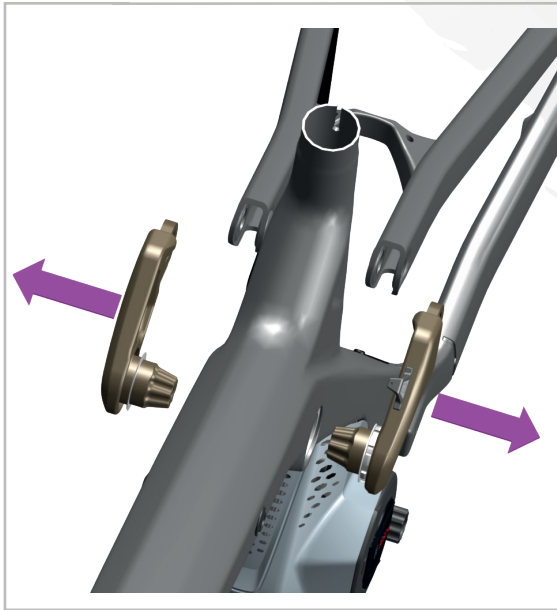
Remove the spacers.



04

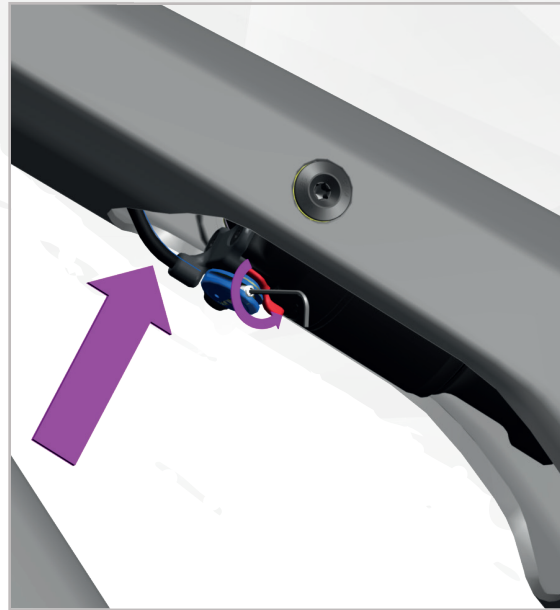
Unscrew the main linkage bolts both sides.





05

Remove linkages completely.



06

loosen and remove the twinloc cable.





07

Unscrew the shock bolts both sides.



08

Lower out the shock, and remove the inner linkages. First by releasing the grub screw then the shock bolt.





All rights reserved ©2021 SCOTT Sports SA

ILLUSTRATIONS

Mud: Designed by starline / Freepik

The information contained in this techbook is in various languages but only the English version will be relevant in case of conflict.
Although SCOTT Sports SA has published all information contained in this techbook after careful examination, SCOTT Sports SA assumes no liability for being up-to-date, correct, reliable or complete. SCOTT Sports SA reserves the right to change the content of this techbook, particularly colors, materials and specifications, at any time without prior notice. Any liability shall be exempted.
Products shown may not be available in all regions, please check with your local SCOTT retailer for availability.

EDITOR

SCOTT SPORTS SA
Route du Crochet 11
1762 Givisiez
Switzerland

Authorized Representative: Beat Zaugg, Pascal Ducrot

Tel: +41 (0)26 460 16 16
Fax: +41 (0)26 460 16 00
webmaster.marketing@scott-sports.com
www.scott-sports.com

Commercial register: Fribourg
Register number: CH-217-0135214-3
VAT-ID: CH466324

